

Product Selection Catalog

interior

Adhered Masonry Veneers

exterior

Natural Stone

commercial

Thin Brick

residential

Manufactured Stone

industrial

Snap for more
information.



www.laticrete.com/mvis

Table of Contents

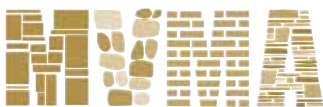
	Page
Warranty Information.....	3
LATICRETE® Masonry Veneer Installation System (MVIS™) Details	4 – 5
Fluid Applied Air and Water Barrier/Waterproofing Systems	
LATICRETE Air & Water Barrier.....	7
LATICRETE Waterproofing / Anti-Fracture Fabric	7
LATAPOXY® Waterproof Flashing Mortar.....	7
Polymer Fortified Masonry Veneer Mortar	
LATICRETE Hi-Bond Masonry Veneer Mortar.....	8
LATICRETE Hi-Bond Rapid Masonry Veneer Mortar	8
LATICRETE Masonry Veneer Mortar.....	8
LATICRETE Thin Brick Mortar.....	9
Thick Bed/Specialty Mortar	
LATICRETE 8500 Glass Block	9
LATICRETE Premium Mortar Bed	9
Latex Admix	
LATICRETE 101 Rapid Admix.....	10
LATICRETE 60 Acrylic Admix	10
LATICRETE 8510 Bonding Admix	10
Epoxy Adhesive	
LATAPOXY 310 Stone Adhesive.....	11
LATAPOXY 310 Cordless Mixer.....	11
LATAPOXY 310 Cordless Mixer Nozzles	11
Pointing Mortar	
LATICRETE Premium Masonry Pointing Mortar	12
LATICRETE Masonry Pointing Mortar.....	12
LATICRETE Mortar Enhancer	12
LATICRETE Epoxy Pointing Mortar Liquids	13
LATICRETE Epoxy Pointing Mortar Part C Powders	13
Sealant	
LATICRETE Latasil™	14
LATICRETE Latasil 9118 Primer.....	14
Pointing Mortar and Sealant Color Chart	15



LATICRETE offers the best warranties IN THE INDUSTRY



LATICRETE Proudly Supports the



Masonry Veneer Manufacturers Association



LATICRETE 15 Year System Warranty* – SPD For Steel or Wood Framed Exterior Facades

See Data Sheet 230.15SPD for complete warranty information.

APPLICATION	PRODUCTS
Air and Water Barrier/ Waterproofing Systems	LATICRETE® Air & Water Barrier LATAPOXY® Waterproof Flashing Mortar
Scratch and Brown Plaster Coats	LATICRETE Premium Mortar Bed
Thin Bed	LATICRETE Hi-Bond Masonry Veneer Mortar LATICRETE Masonry Veneer Mortar LATICRETE Thin Brick Mortar
Pointing/Grouting	LATICRETE Premium Masonry Pointing Mortar LATICRETE Masonry Pointing Mortar
Sealant†	LATICRETE Latasil™ LATICRETE Latasil 9118 Primer

LATICRETE 25 Year System Warranty** – SPD

See Data Sheet 025.0SPD for complete warranty information.

APPLICATION	PRODUCTS
Air and Water Barrier/ Waterproofing Systems	LATICRETE Air & Water Barrier LATAPOXY® Waterproof Flashing Mortar
Scratch and Brown Plaster Coats	LATICRETE Premium Mortar Bed
Thin Bed	LATICRETE Hi-Bond Masonry Veneer Mortar LATICRETE Masonry Veneer Mortar LATICRETE Thin Brick Mortar
Pointing/Grouting	LATICRETE Premium Masonry Pointing Mortar LATICRETE Masonry Pointing Mortar
Sealant†	LATICRETE Latasil LATICRETE Latasil 9118 Primer

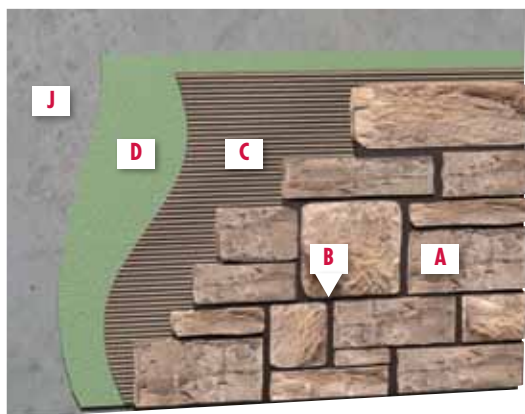
NOTES:

† Use of suitable flexible sealant is required per Tile Council of America Detail EJ171 for use in expansion joints, coves, corners, changes in plane and other joints or wherever tile or stone abuts dissimilar materials or restraining surfaces.

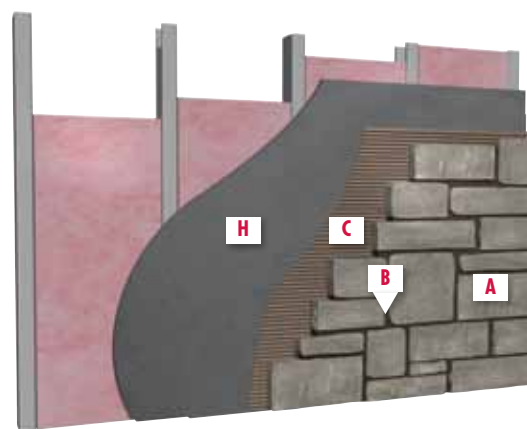
* See Data Sheet 230.15SPD for complete warranty information.

** See Data Sheet 025.0SPD for complete warranty information.

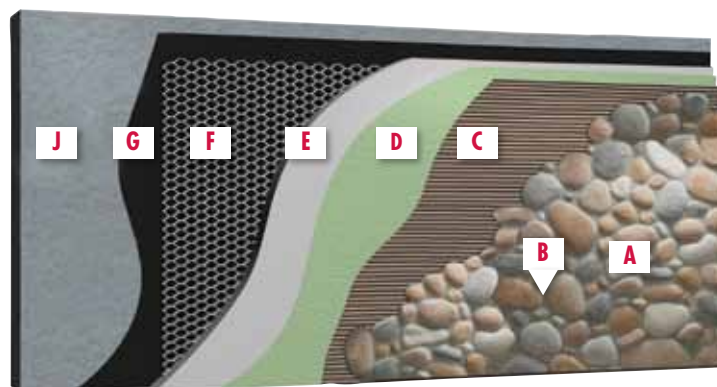
Exterior wall
Concrete wall — Direct adhered with
fluid applied air and water barrier



Interior wall
Framed wall with cement backer board substrate



Exterior wall
Concrete wall — lath with scratch and brown coat



DETAIL LEGEND

A Adhered Masonry Veneer

B LATICRETE® Masonry Pointing Mortar

C LATICRETE Masonry Veneer Mortar

D LATICRETE Air & Water Barrier

E LATICRETE Premium Mortar Bed

F Metal Lath, 3.4# galvanized diamond wire lath

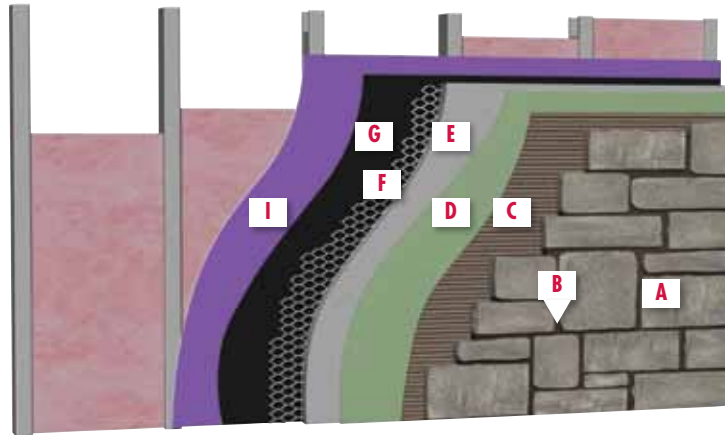
G Vapor retarder/cleavage membrane type and location per design professional (e.g. 15 lb builders felt or 4 mil polyethylene sheeting)

H Cement backer board

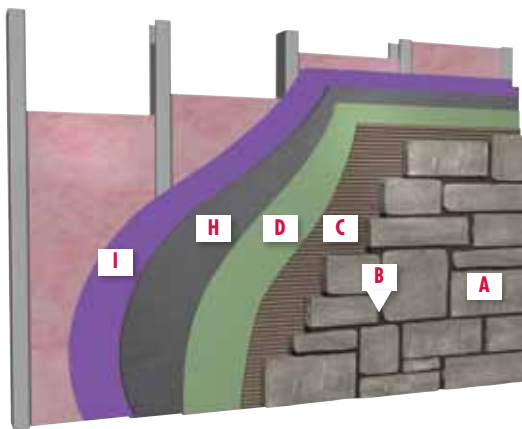
I Exterior rated sheathing

J Concrete or masonry

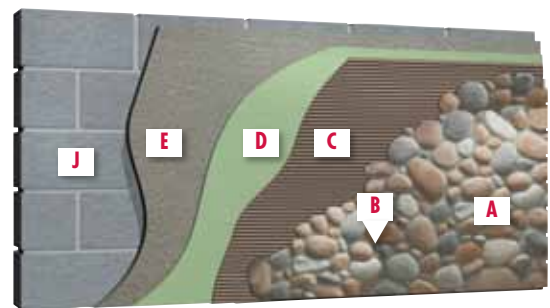
Exterior wall
Framed wall with exterior rated sheathing — lath with scratch and brown coat



Exterior wall
Framed wall with exterior rated sheathing — cement backer board substrate



Exterior wall
Concrete Masonry Unit (CMU) wall with skim coat — Direct adhered with fluid applied air and water barrier



NOTE: Substrates scheduled to receive manufactured stone, natural stone or thin brick must be structurally sound, rigid and conform to good design/engineering practices in accord with all applicable building codes with maximum deflection under all live, dead and impact loads, including concentrated and all anticipated loads of $L/600$ for all exterior veneer types. Steel and wood frame constructs shall also be designed to meet this criteria. Lateral bracing and edge support for cement backer board panels is required. Install sheathing panels as directed by board manufacturer's installation instructions and building code requirements.

2. LATICRETE® Masonry Pointing Mortar is designed to meet product applicable project specifications. LATICRETE Masonry Pointing Mortar does not inhibit efflorescence from occurring in natural or manufactured stone facade installations. Efflorescence is a normal condition that may occur when installing portland cement based products. During installation, strike joints in a consistent time frame relevant to application time. Pointing mortar should be thumbprint dry before striking. Striking joints too early or too late can create color inconsistencies.

3. Masonry Pointing Mortar color samples are guides only. LATICRETE does not warrant color matching to any color guide produced. Actual shade and texture will depend on job site conditions, lighting, installation techniques, and types of tile

or stone used. Verify actual appearance and compatibility with a test area before installing. Blend colored mortars with different control numbers. No claims for color shade variations will be honored.

4. Please consult LATICRETE Technical Services for more information. 1.800.243.4788, ext. 235, www.laticrete.com, technicalservices@laticrete.com.

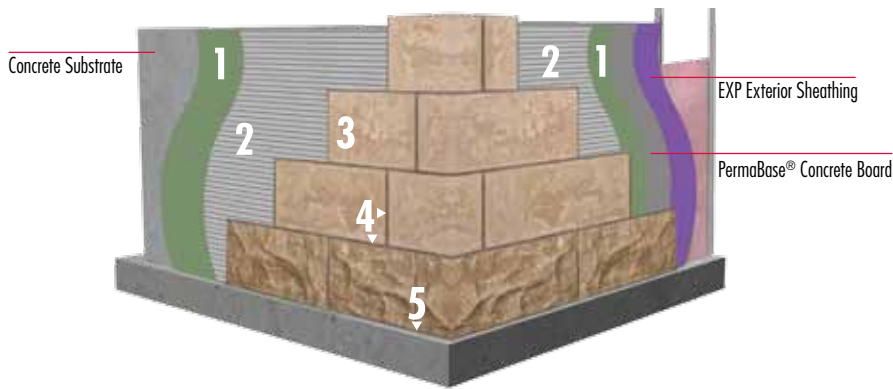
5. For information on pumpable scratch and brown coats, contact LATICRETE Technical Services.

6. For complete application information and limitations consult related Product Data Sheets and Execution Statements related to these details and applicable standards. See warranty Data Sheet 025.0SPD for full information and terms.

7. As a professional courtesy, LATICRETE offers technical services free of charge. The user maintains all responsibility for verifying the applicability and suitability of the technical service or information provided.

8. Design and placement of weather resistive barriers, vapor retarders and air / water barriers to be detailed by project design professional.

THE LATICRETE ADVANTAGE



1 LATICRETE® Air & Water Barrier

2 LATICRETE Masonry
Veneer Mortar

3 Adhered masonry veneer

4 LATICRETE Premium
Pointing Mortar

5 LATICRETE Latasil™

THE CHALLENGE

The explosive increase in popularity of adhered masonry veneer facades has created a need for higher performance, factory produced installation materials to assure consistently high quality installations.

Up to now, the installation of adhered masonry veneers has required the use of site-mixed Type S or Type N mortars — materials that are subject to large variations in consistency, quality and performance and which also limit the installation technique to that of traditional masonry.

Projects that have been plagued by delaminating stone, water intrusion and other performance issues have left specifiers in need of a coordinated solution. This traditional method is not engineered as part of a complete wall system and therefore does not offer warranties from a reliable source willing to stand behind the installation.

THE SOLUTION

Realizing these needs, and based on our globally proven technology, LATICRETE has developed an installation system that provides a permanent, high strength installation that is freeze/thaw stable and protected from water intrusion.

Backed by either the LATICRETE® 15 Year System Warranty or 25 Year System Warranty — SPD*, the LATICRETE Masonry Veneer Installation System (MVIS™) allows for increased productivity utilizing either traditional masonry veneer installation techniques or the “tile setter’s” method.

Architectural details are offered at www.laticrete.com/MVIS to help design professionals, contractors and installers understand the range of possible applications — and appropriate products and techniques which will assure long-term performance on projects of all types.

*See Data Sheet 230.15SPD and 025.0SPD for complete warranty information.

GREENGUARD Certified
LOW VOC
LEED COMPLIANT



Many companies might say their products are low VOC: only one independently certifies it — LATICRETE.

- Third Party GREENGUARD Certification, Required to Meet Stringent Indoor Air Quality Standards
- Certified by GREENGUARD for Children & Schools
- Helps Contribute Toward LEED Certification
- Product Certifications Readily Available at www.laticrete.com/green

LATICRETE® Air & Water Barrier

A single component, load bearing, vapor permeable, fluid applied, waterproofing, crack isolation, air barrier membrane. LATICRETE Air & Water Barrier produces a seamless, monolithic elastomeric coating and bonds directly to a wide variety of substrates. A vital component of the LATICRETE Air & Water Barrier comprehensive building protection system.

- Install Adhered Masonry Veneers (AMV) in 1 – 2 hours
- Designed for use as an air and water barrier behind most exterior wall claddings
- Excellent bond strength
- May contribute to overall building energy efficiency
- Easy to clean up with water
- Exceeds ICC-ES AC 212

PACKAGING

Commercial Unit: 5 gallon (19 l) pail liquid; 36 units per pallet.

APPROXIMATE COVERAGE

Per Commercial Unit

250 ft² (23.2 m²)



Refer to Data Sheet 661.0



LATICRETE Waterproofing / Anti-Fracture Fabric

A ready to use thin, flexible, non-woven reinforcement fabric designed for use specifically with LATICRETE Air & Water Barrier to treat sheathing joints in accordance with manufacturer's requirements. Also use LATICRETE Waterproofing / Anti-Fracture Fabric to treat inside, outside corners and rough openings to allow for faster installations. A vital component of the LATICRETE Air & Water Barrier comprehensive building protection system.

PACKAGING:

75' (23 m) long roll fabric 6" (150 mm) wide. 20 per carton or 1 each.

APPROXIMATE COVERAGE

See data sheets for LATICRETE Air & Water Barrier.



LATAPOXY® Waterproof Flashing Mortar

LATAPOXY® Waterproof Flashing Mortar is an epoxy based 3 component, trowel applied, waterproofing and vapor barrier membrane. It can be used to waterproof seams, gaps or joints between a variety of substrates and metal and PVC pipe penetrations or flashing. It is specifically designed to be used under adhered masonry veneer, stone or brick for rapid installations which require a fast curing waterproof flashing. LATAPOXY Waterproof Flashing Mortar is flexible, easy to apply and will allow for rapid installations. A vital component of the LATICRETE Air & Water Barrier comprehensive building protection system.

- Easy to apply using a trowel
- Adheres to metal and PVC pipes, drains and flashing
- Waterproof seam between flashing and adjacent waterproofing materials

PACKAGING

3.5 gallon pail with 2 LATAPOXY Waterproof Flashing Mortar Part A 1.4 lbs (0.65 kg), 2 LATAPOXY Waterproof Flashing Mortar Part B 1.15 lbs (0.5 kg), and 2 LATAPOXY Waterproof Flashing Mortar Part C 5.5 lbs (2.5 kg)

48 units per pallet.

APPROXIMATE COVERAGE

45 ft²/unit (4.2 m²) at 1/8" (3 mm) thick, depending on application



Refer to Data Sheet 070.0

Polymer Fortified Veneer Mortar



Performance Level: BEST

Refer to Data Sheet 246.0



LATICRETE® Hi-Bond Masonry Veneer Mortar

The ultimate, polymer fortified, adhesive mortar for interior and exterior installation of large format adhered masonry veneer, stone, ceramic tile, pavers or thin brick. LATICRETE® Hi-Bond Masonry Veneer Mortar mixes easily with water and is formulated to achieve unsurpassed workability and adhesion.

PACKAGING

50 lb (22.7 kg) bag; 56 bags per pallet; Grey.

MIXING

Approximately 5.5 quarts (5.2 *l*) of water per bag.

APPROXIMATE COVERAGE Per 50 lb (22.7 kg) bag

NOTCH TROWEL	COVERAGE
1/4" x 3/8" (6 mm x 9 mm)	60–70 ft² (5.6–6.5 m²)
1/2" x 1/2" (12 mm x 12 mm)	40–45 ft² (3.7–4.2 m²)
Adhered Masonry Veneer Application Method	30–33 ft² (2.8–3.1 m²)



Performance Level: BEST

Refer to Data Sheet 247.0

LATICRETE Hi-Bond Rapid Masonry Veneer Mortar

The ultimate, fast setting, polymer fortified, adhesive mortar for interior and exterior installation of adhered masonry veneer stone thin brick or pavers. LATICRETE Hi-Bond Rapid Masonry Veneer Mortar mixes easily with water and is formulated to achieve unsurpassed workability and adhesion in 2–4 hours.

PACKAGING

25 lb (11.3 kg) bag; 104 bags per pallet; Grey.

MIXING

Approximately 3 quarts (2.9 *l*) of water per 25 lb (11.3 kg) bag.

APPROXIMATE COVERAGE Per 25 lb (11.3 kg) bag

NOTCH TROWEL	COVERAGE
1/4" x 3/8" (6 mm x 9 mm)	25–30 ft² (2.3–2.8 m²)
1/2" x 1/2" (12 mm x 12 mm)	20–23 ft² (1.9–2.1 m²)
Adhered Masonry Veneer Application Method	15–17 ft² (1.4–1.6 m²)



Performance Level: BEST

Refer to Data Sheet 060.0



LATICRETE Masonry Veneer Mortar

LATICRETE Masonry Veneer Mortar is a patented, versatile polymer fortified adhesive mortar designed specifically for the installation of adhered masonry veneer, stone and thin brick. A high performance mix provides maximum non-sag performance for vertical installations and also obtains maximum bond strength to the substrate and selected veneers. Reinforced with Kevlar[^] for added strength, LATICRETE Masonry Veneer Mortar offers exceptional workability.

PACKAGING

40 lb (18.2 kg) bag; 56 bags per pallet; Grey.

APPROXIMATE COVERAGE Per 40 lb (18 kg) bag

VERTICAL APPLICATIONS	ft²	m²
NOTCH TROWEL	COVERAGE	
1/4" x 3/8" (6 mm x 9 mm) notched trowel	58–62	5.4–5.8
1/2" x 1/2" (12 mm x 12 mm) notched trowel	42–48	3.9–4.5
Adhered Masonry Veneer Application Method	31–38	2.9–3.5

Polymer Fortified Veneer and Thick Bed/Specialty Mortar

LATICRETE Thin Brick Mortar

LATICRETE Thin Brick Mortar is a multi-use, polymer fortified adhesive mortar built on the LATICRETE Water Dispersion Technology (WDT) platform. WDT provides for the complete dispersion of water within the mix allowing users to achieve the desired application consistency. LATICRETE Thin Brick Mortar offers tremendous utility including non-sag wall installations, medium bed build up of up to 3/4" (19 mm) and thin-set applications on floors. In addition, LATICRETE Thin Brick Mortar is manufactured using LATICRETE DUST LOCK™ Technology. This unique way of manufacturing our adhesives incorporated with LATICRETE plastic packaging dramatically reduces mess both during transportation of the product as well as during mixing.

PACKAGING

50 lb (22.7 kg) bag; 56 bags per pallet; Grey.

MIXING

Approximate 5.25 – 6 quarts (5– 5.7 *l*) water required per 50 lb (22.7 kg) bag:

APPROXIMATE COVERAGE Per 50 lb (22.7 kg) bag	
NOTCH TROWEL	COVERAGE
1/4" x 3/8" (6 mm x 9 mm)	60–70 ft² (5.6–6.5 m²)
1/2" x 1/2" (12 mm x 12 mm)	40–45 ft² (3.7–4.2 m²)
Adhered Masonry Veneer Application Method	30–35 ft² (2.8–3.2 m²)



Refer to Data Sheet 248.0



LATICRETE 8500 Glass Block Mortar

LATICRETE 8500 Glass Block Mortar is a high-strength, factory-prepared mortar for installing glass block. Economical and easy to use, LATICRETE 8500 Glass Block Mortar is recommended for interior and exterior use. LATICRETE 8500 Glass Block Mortar eliminates job site blending and provides a factory controlled mix for high performance.

PACKAGING

50 lb (22.7 kg) bag; 56 bags per pallet.

APPROXIMATE COVERAGE Per 50 lb (22.7 kg) bag	
PER 100 ft² (9 m²) (3-7/8" [10 cm] wide nominal block)	NUMBER OF BAGS (based on 1/4" [6 mm] mortar joint)
Square 6" (15 cm) block	14 bags
Square 8" (20 cm) block	10.5 bags
Square 12" (30 cm) block	7 bags



Refer to Data Sheet 291.0

LATICRETE Premium Mortar Bed

A polymer fortified blend of carefully selected raw materials, portland cement and graded aggregates. LATICRETE Premium Mortar Bed does not require the use of latex admixtures. Just add water to produce thick bed mortar with exceptional strength. LATICRETE Premium Mortar Bed is ideal as the brown coat over wire lath in the LATICRETE MVIS™ System.

PACKAGING

60 lb (27.3 kg) bag; 56 bags per pallet.

APPROXIMATE COVERAGE
12 ft² at 1/2" (1.1 m² at 12 mm)
6 ft² at 1" thickness (0.56 m² at 25 mm)
3 ft² at 2" (0.3 m² at 50 mm)



Refer to Data Sheet 263.0





Refer to Data Sheet 264.0

LATICRETE® 101 Rapid Latex Admix

Offers high strength, rapid-setting properties when mixed with portland cement-based materials. Allows for pointing within 2 – 4 hours. Also be used with fast-setting wall or floor patching and repairs. Meets ANSI A118.4 and ANSI A118.11 bond strength requirements.

PACKAGING

5 gallon (19 l) pail; 36 pails per pallet.

MIXING

2 gallons (7.6 l) mixes with approximately 50 lbs (22.7 kg) of LATICRETE masonry mortars.



Performance Level: BETTER

Refer to Data Sheet 268.0

LATICRETE 60 Acrylic Admix

LATICRETE 60 Acrylic Admix is an acrylic latex admixture used in place of water to increase the strength of portland cement mortars, cement grouts, cement mortar beds, and other portland cement based materials.

PACKAGING

5 gallon (19 l) pail; 36 pails per pallet.

MIXING

2 gallons (7.6 l) mixes with approximately 50 lbs (22.7 kg) of LATICRETE masonry mortars.



Performance Level: BEST

Refer to Data Sheet 249.4

LATICRETE 8510 Bonding Admix

LATICRETE 8510 Bonding Admix is a concentrated acrylic admixture for use with portland cement mixes, dramatically improving their workability and physical properties. Additional uses include: conventional mortars, plasters, screeds, mortar beds, dry-set mortars and portland cement grouts.

PACKAGING

5.3 gal (20 l) pail; 36 pails per pallet.

MIXING

2 gallons (7.6 l) mixes with approximately 50 lbs (22.7 kg) of LATICRETE masonry mortars.

LATAPOXY® 310 Stone Adhesive

A two-component, high strength construction epoxy adhesive for spot bonding large format tile and stone on vertical surfaces, for interior or approved exterior applications. Offers major advantages in terms of speed and productivity over mechanical anchoring, plaster and wire, and the thin-set method of veneer installation. Available in standard and rapid set formulas. Easier to install when compared to traditional methods — no drilling, cutting of kerfs or setting of pins — LATAPOXY® 310 Stone Adhesive allows for quick, easy plumb adjustment while stone is in place to compensate for uneven walls and stone thickness variations. LATAPOXY 310 Stone Adhesive is permanent; it will not fail or deteriorate over time and is ICC and IBC approved.

PACKAGING

Kit: 2.6 gallon (10 *ℓ*): All components packed in one carton; 40 cartons per pallet. Available in standard and rapid versions.

2 gallon (8 *ℓ*): 1.06 quart (8 x *ℓ*) units packed in one carton; 40 cartons per pallet. Available in standard and rapid versions.

Cartridges: 2.3 gallons (9 *ℓ*) Cartridge Pack (for use in LATAPOXY 310 Cordless Mixer): 15 x 0.16 gallon (0.6 *ℓ*) cartridges per carton, 27 cartons per pallet. Available in standard and rapid versions.

MIXING

Combine equal volumes of LATAPOXY 310 Stone Adhesive Part A and LATAPOXY 310 Stone Adhesive Part B (1:1). Do not mix more than approximately 0.13 gallons (0.5 *ℓ*) of LATAPOXY 310 Rapid Stone Adhesive at a time.

APPROXIMATE COVERAGE		
Average Inches (or millimeters) out of plumb	LATAPOXY® 310 Stone Adhesive Thickness	Approximate Coverage/10 Liter Units
Plumb Wall 1/8" (3 mm)	1/8" Thick (3 mm)	300 – 325 ft² (27 – 30 m²)
1/4" (6 mm)	1/4" Thick (6 mm)	150 – 170 ft² (14 – 16 m²)
1/2" (12 mm)	1/2" Thick (12 mm)	75 – 80 ft² (7 – 7.5 m²)



Refer to Data Sheets
679.0 and 679.3

LATAPOXY 310 Cordless Mixer and Nozzles

Triple your productivity of vertical stone and tile installations and dramatically reduce labor costs with the exclusive dual component LATAPOXY 310 Cordless Mixer. Quickly and easily dispenses LATAPOXY 310 Stone Adhesive onto stone veneers. Hundreds of square feet can be installed per day with less effort and greater success with this system. Patented design and gear system allow speed and dosing control for accurate applications every time. No mixing, just insert the dual component cartridge, screw on mixing nozzle and pull the trigger!

PACKAGING

One LATAPOXY 310 Cordless Mixer per carton; 24 cartons per pallet.



Refer to Data Sheets 683.0



Performance Level: BEST
Refer to Data Sheet 274.0



LATICRETE® Premium Masonry Pointing Mortar

LATICRETE® Premium Masonry Pointing Mortar is a factory prepared, high strength, fast setting, high performance mortar system designed for pointing joints in new and existing masonry veneer installations. LATICRETE Premium Masonry Pointing Mortar is color consistent. Ideal for floors and walls (joint widths of 1/4" – 1/2" [6 – 12 mm]). Mix only with water.

COLORS

See Pointing Mortar Color Chart on page 15 for a list of available colors.

PACKAGING

25 lb (11.3 kg) bag; 104 bags per pallet.

APPROXIMATE COVERAGE

350 – 380 linear feet (107–116 linear m) with
3/8" wide by 1/4" (9 mm x 6 mm) deep joint



Refer to Data Sheet 228.0

LATICRETE Masonry Pointing Mortar

A factory prepared, Masonry Pointing Mortar designed to be mixed with water or LATICRETE Mortar Enhancer. Formulated from a blend of high strength portland cement, graded aggregates, and color-fast pigments. Provides a joint that is dense, hard and durable.

COLORS

See Pointing Mortar Color Chart on page 15 for a list of available colors.

PACKAGING

50 lb (22.7 kg) bag; 56 bags per pallet.

APPROXIMATE COVERAGE

700–750 linear ft (213–229 linear m) with
3/8" wide by 1/4" (9 mm x 6 mm) deep joint



Performance Level: BETTER
Refer to Data Sheet 277.0



LATICRETE Mortar Enhancer

A ready to use liquid admixture formulated for mixing with LATICRETE Masonry Pointing Mortar. Replacing mix water eliminates the common occurrences of shading and blotching caused by the organic minerals found in water. Designed for use with LATICRETE Masonry Pointing Mortar, LATICRETE Mortar Enhancer when used in place of water, eliminates shading and blotching caused by minerals and organic particles commonly found in domestic water. Inhibits the growth of stain-causing mold and mildew in the grout joints with Microban® antimicrobial product protection. Ideal for all interior and exterior pointing mortar applications. For mortar joint widths of 3/16" (5 mm) up to 1-1/4" (32 mm).

PACKAGING

5 gal (19 l) pail; 36 pails per pallet.

LATICRETE Epoxy Pointing Mortar Liquids

LATICRETE Epoxy Pointing Mortar is a three component, high performance epoxy based pointing mortar system. Superior joint durability and stain resistance. The non-sag formula mixes and installs with ease.

- Structural glazed facing tile (SGFT) glazed concrete block and glazed clay tile
- Residential and commercial
- Interior use only
- Vertical and overhead applications
- Wet areas

PACKAGING

Kit includes LATICRETE Epoxy Pointing Mortar Part A: 4 x 1.3 lb (0.6 kg), LATICRETE Epoxy Pointing Mortar Part B: 4 x 1.3 lb (0.6 kg), gloves, sponge, and cleaning packets packed in one carton; 44 cartons per pallet.

NOTE: LATICRETE® Epoxy Pointing Mortar Part C filler powder required and sold separately.

APPROXIMATE COVERAGE Standard unit for pointing joints

600—650 linear ft (183—198 linear m) of
3/8" wide x 1/4" (9 mm x 6 mm) deep joint



Performance Level: BEST[†]

Refer to Data Sheet 273.0



[†] Interior applications only.

LATICRETE Part C Powders

Available in 9 colors and designed to be used with LATICRETE Epoxy Pointing Mortar AB liquids.

COLORS

See Pointing Mortar Color Chart on page 15 for a list of available colors.

Custom colors available.

PACKAGING

9 lb (4.1 kg) container; 4 containers per carton; 44 cartons per pallet.

NOTE: LATICRETE® Epoxy Pointing Mortar Part AB Liquids required and sold separately.



Performance Level: BEST

Refer to Data Sheet 273.0





Refer to Data Sheets 6200.1



LATICRETE® Latasil™

High performance, 100% silicone sealant designed for use in coves, corners, changes in plane and expansion joints in exterior and interior applications of adhered masonry veneer. Can be used in fountains, water features and other wet area applications. LATICRETE® Latasil™ conforms to ASTM C 920 and ASTM C 794 adhesion properties and inhibits the growth of stain-causing mold and mildew in sealant joints with Microban® antimicrobial product protection. A vital component of the LATICRETE Air & Water Barrier Comprehensive Building Protection System.

COLORS

See Pointing Mortar Color Chart on page 15 for a list of available colors.

PACKAGING

10.3 oz (305 ml) cartridges; 6 cartridges per carton; 240 cartons per pallet.

APPROXIMATE COVERAGE Per cartridge

THICKNESS	COVERAGE
1/4" x 1/4" (6 mm x 6 mm)	25 linear feet (7.62 m)
3/8" x 3/8" (9 mm x 9 mm)	11 linear feet (3.35 m)



Refer to Data Sheet 6528.1

LATICRETE Latasil™ 9118 Primer

A single component, primer adhesive designed to increase the adhesion of porous stone or permanently wet/underwater applications. Increases adhesion for porous stone, underwater, and permanent wet area applications.

PACKAGING

8 oz (240 ml) bottle; 5 bottles per carton; 50 cartons per pallet.

APPROXIMATE COVERAGE Per cartridge

THICKNESS	COVERAGE
1/4" x 1/4" (6 mm x 6 mm)	350 linear feet (106 m)
3/8" x 3/8" (9 mm x 9 mm)	175 linear feet (53 m)

Pointing Mortar and Sealant Color Chart

This chart shows available colors for the following:

LATICRETE Masonry Pointing Mortar

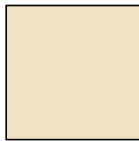
LATICRETE Premium Masonry Pointing Mortar

LATICRETE Epoxy Pointing Mortar

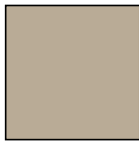
△ LATICRETE Latasil™ available in clear and colors indicated.



44 Bright White
△



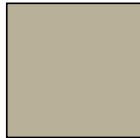
39 Mushroom
△



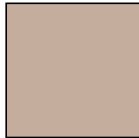
40 Latte
△



66 Chestnut Brown
△



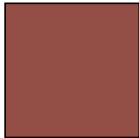
24 Natural Grey
△



38 River Rock



58 Terra Cotta
△



46 Quarry Red



45 Raven

POINTING MORTAR AND SEALANT COLOR GUIDELINES

Pointing Mortar and sealant samples are guides only. LATICRETE does not warrant color matching to this color chart or to any color guide produced. Actual shade and texture will depend on job site conditions, lighting, installation techniques and types of adhered masonry veneer used, and may vary from this color chart, color

channel kits and color swatch on product packaging. Verify actual appearance and compatibility with a test area before installing. Blend pointing mortar with different control numbers. No claims for color shade variations will be honored.

Note: Color availability of all Laticrete Pointing Mortars are subject to change.



Disponible en français.

Visiter www.laticrete.com/fr pour les informations complètes.

Disponible en español.

Visite www.laticrete.com/sp para la información completa.

Corporate Headquarters:

LATICRETE International, Inc.
One LATICRETE Park North
Bethany, CT 06524-3423 USA
1.800.243.4788
+1.203.393.0010

www.laticrete.com

Asia Pacific: +852.2526.6660

Australia: +61.7.3865.1599

China: +86.21.5789.3300

Europe: +34.96.649.1908

India: +91.40.3041.3100

Latin America: +1.203.393.0010

Middle East: +971.7.244.6396

South East Asia: +65.6515.3028

DS-005.2-0512

©2012 LATICRETE International, Inc.
All trademarks shown are the intellectual properties of their respective owners.



EPO
Product made from 100% recycled wood fiber
www.fsc.org cert no. SW-COC-1550
© 1996 Forest Stewardship Council

