

CONCRETE ARCHITECTURAL SLABS

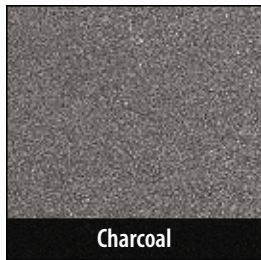


CREATE
EXTRAORDINARY
PLACES

Concrete Architectural Slab Colors and Textures*

VANCOUVER BAY

18" x 18", 12" x 24" & 24" x 24"



24" x 24" only



GLACIER SLATE

24" x 24"



STOCKING COLORS

NOTE: Product colors and availability subject to change without notice.

Stocking quantities vary, please confirm availability.

● = Stock availability

	Vancouver Bay Ginger	Vancouver Bay Charcoal	Vancouver Bay Latte	Vancouver Bay Gray	Vancouver Bay Tan	Vancouver Bay Graphite	Glacier Slate Platinum	Glacier Slate Charcoal	Glacier Slate Gray	Glacier Slate Latte	Glacier Slate Tan	
18" x 18" x 1¾" (457 mm x 457 mm x 42 mm)			●				●	●				
12" x 24" x 1¾" (303 mm x 606 mm x 45 mm)			●	●	●							
24" x 24" x 1¾" (606 mm x 606 mm x 45 mm)		●	●	●	●	●						
24" x 24" x 1¾" (608 mm x 608 mm x 45 mm)									●	●	●	●

* Photographs show the general appearance of color and textures.

Due to the limitations of photography, the actual product shipped is not guaranteed to exactly duplicate each shade and texture shown here. Final color and product selection should be made from actual samples.

Concrete Architectural Slab Specifications

1. TECHNICAL INFORMATION

PRODUCT	ACTUAL SIZE	COVERAGE		PACKAGING Pcs per Pallet	WEIGHT	
		SF (m ²) Per unit	SF (m ²) per pallet		Each Lbs (kg)	Pallet Lbs (kg)
Vancouver Bay 18 x 18	17 7/8" x 1 3/4" x 17 7/8" (454 mm x 45 mm x 454 mm)	2.25 sf (0.21 m ²)	126. sf (11.7 m ²)	56	45 (20.4 kg)	2,570 (1,134 kg)
Vancouver Bay 12 x 24	11 7/8" x 1 3/4" x "23 15/16" (301 mm x 608 mm x 45 mm)	2.0 sf (0.19 m ²)	112 sf (10.4 m ²)	56	45 (20.4 kg)	2,570 lb (1,134 kg)
Vancouver Bay 24 x 24	23 15/16" x 23 15/16" x 1 3/4" (608 mm x 45 mm x 608 mm)	4.0 sf (0.37 m ²)	96 sf (10.4 m ²)	24	90 (41 kg)	2,210 lb (1,134 kg)
Glacier Slate 24 x 24	23 15/16" x 23 15/16" x 1 3/4" (608 mm x 45 mm x 608 mm)	4.0 sf (0.37 m ²)	112 sf (10.4 m ²)	28	90 (40.8 kg)	2,210 (1,134 kg)

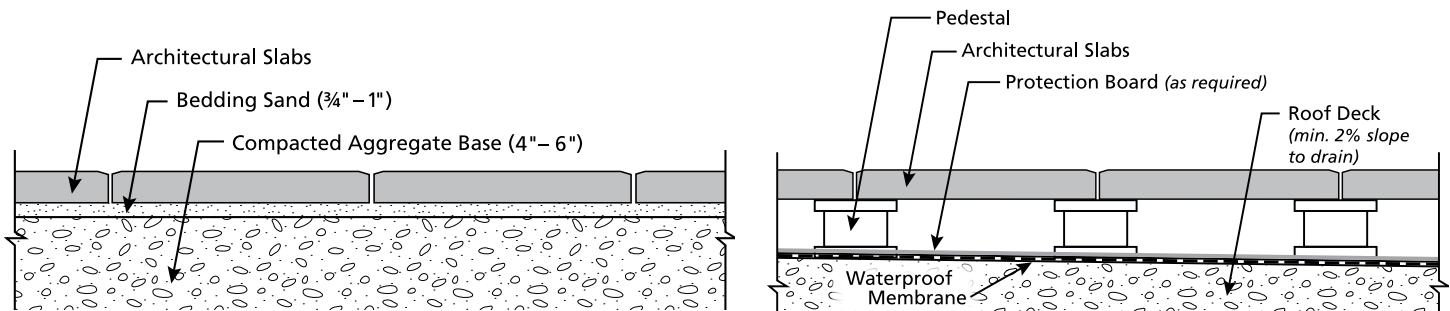
All Weight per Pallet noted above includes a 50-lb pallet weight.

2. PHYSICAL PROPERTIES

Compressive Strength	8,000 psi (55.2 MPa)
Flexural Strength	650 psi (4.5 MPa)
Freeze-Thaw (Scaling)	Per CSA A231.1-06, Section 6.1.2
Dimensional Tolerance (Length & Width)	-1/16" (1 mm) to + 3/32" (2 mm)
Dimensional Tolerance (Thickness)	± 1/8" (3 mm)

Mutual Materials slabs comply with the requirements of the Canadian Standards Association, CSA A231.1-06

3. INSTALLATION METHODS



SAND-SET APPLICATIONS:

Whether you're designing a walkway, plaza, courtyard, or pool deck, architectural slabs meet your functional and aesthetic needs. Combine slabs with our concrete pavers or segmental retaining walls to create truly unique spaces.

Sand set installation can be used when existing soil is well drained and stable. Proper compaction of aggregate base and bedding sand is critical to prevent settling and movement of the slabs after installation. To prevent instability, bedding sand should not be thicker than 1". Joints should be 1/16" ± and swept with sand. Units can also be set further apart to accommodate pea gravel, ground cover, etc.

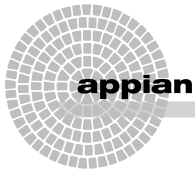
See ICPI Tech Spec #2 for detailed design and installation information.

PEDESTAL-SET APPLICATIONS:

Architectural Slabs provide better use of uneven surfaces, such as roofs and decks. Slabs are attractive, as well as functional when used with a pedestal system.

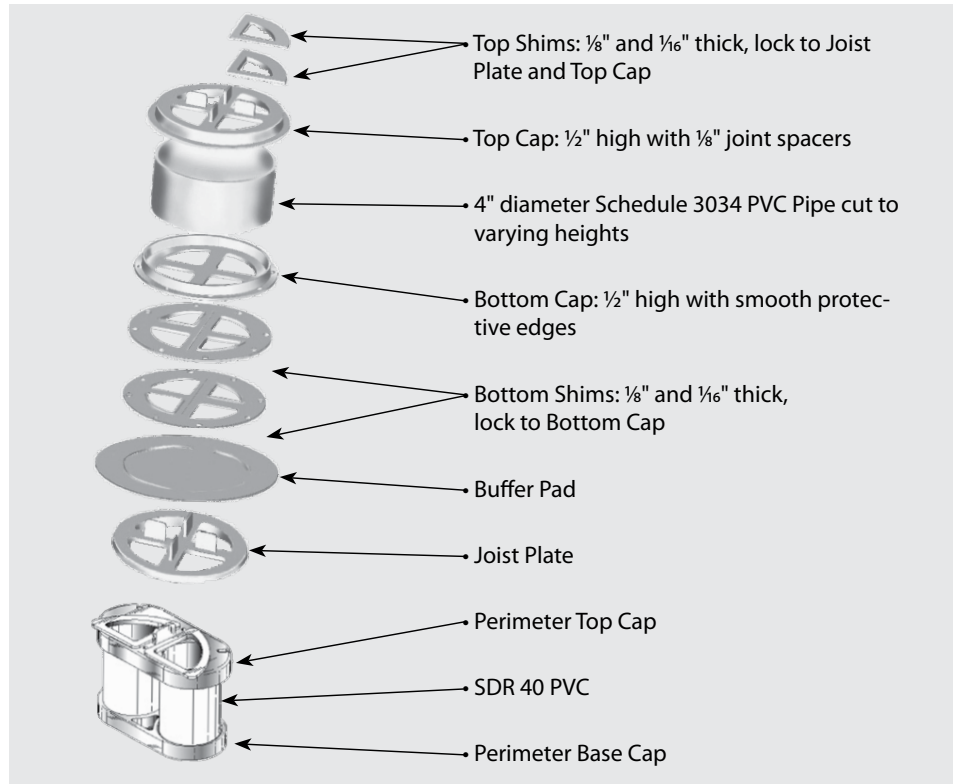
Pedestal installation is ideal for use over sloped areas. Water drains through the joints to access the drainage system while the slabs protect the valuable waterproof membrane. The slabs can easily be removed and replaced to allow access for repair and maintenance to the roof system below.

See ICPI Tech Spec #14 for detailed design and installation information.



AWS PEDESTAL SYSTEM

The AWS™ Pedestal System is an interlocking pedestal support used to ensure level walking surfaces on roofs and decks using products appropriate for elevated foot traffic. Developed by installers, for installers, the AWS Pedestal System provides a long-lasting, affordable alternative to wood and composite systems for both commercial and residential projects.



ScrewJack Pedestals & Accessories (Special Order Only)

PEDESTALS



Model B1
adjust from 1 1/4"-2"



Model B2
adjust from 2"-3"



Model B3
adjust from 3"-3 3/4"



Model B4
adjust from 4 3/4"-7 3/4"



Model C4
coupler adds 2 1/2"-4"
add to B3 & B4

SHIMMING METHODS



Model B11
1/16" rubber



Model PS1
1/8" rigid

FIXED-HEIGHT PEDESTALS



Model PS8
1/2" stackable 3/16" spacer



Model PS9
3/4" stackable 3/16" spacer

SLOPE LEVELING



Model PH5
Top Leveler 0-5/8" slope/ft.



Model LD4
Bottom Leveler
(utilize 1 to 4)
1/4"-1" slope/ft.



For product information and customer service call 1-888-MUTUALØ (688-8250).
For distributors outside Washington, Oregon, Idaho, and Montana call 1-800-477-7137.