

INSTALLATION GUIDELINES



The LATICRETE® Masonry Veneer Installation System (MVIS)

Mutual Materials recommends the LATICRETE® Masonry Veneer Installation System (MVIS) for adhering Slimbrick. For over 50 years, LATICRETE has continuously provided the latest technology in construction materials and methods to deliver superior problem-free installations for tile and stone.

LATICRETE's proven technology will provide a permanent, high-strength installation that is freeze thaw stable and protects from water intrusion.

The LATICRETE MVIS system provides the solution by offering a comprehensive quality-controlled installation system. Utilizing proven materials, LATICRETE MVIS products include a revolutionary waterproofing membrane, polymer-fortified adhesive mortars that provide non-sag performance, and a masonry-pointing mortar.

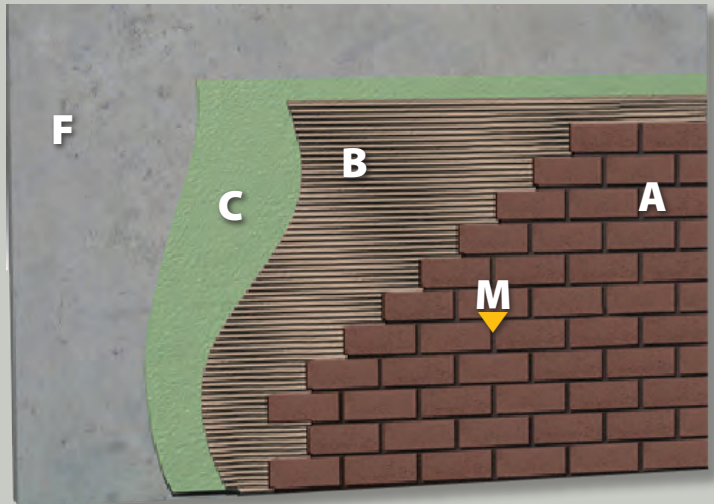
LATICRETE offers a comprehensive 25-year, 100% labor and materials system warranty* for masonry veneer installations over concrete and masonry substrates (for both interior and exterior applications) and a 15-year, 100% labor and materials system warranty** for steel or wood-framed exterior facades.

* See Data Sheet 025.OSPD for complete warranty details.

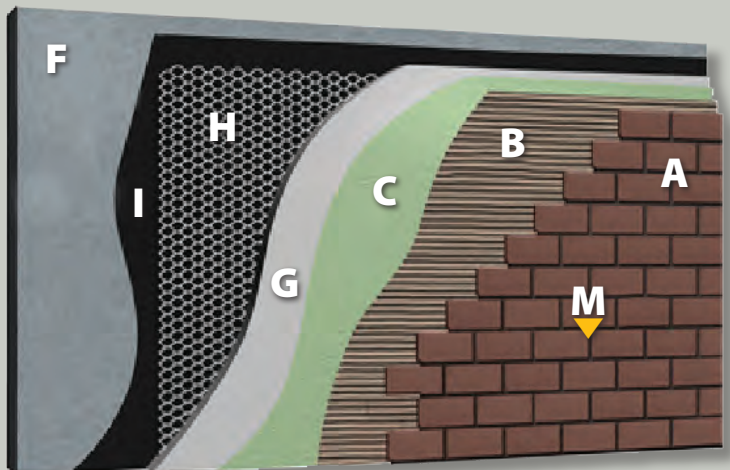
** See Data Sheet 230.15SPD for complete warranty details.

KEY

- A** – Thin Brick or Finish Material
- B** – LATICRETE® MVIS Thin Brick Mortar
- C** – LATICRETE MVIS AIR & WATER BARRIER
- D** – Cement Backer Board
- E** – Exterior Grade Rated Sheathing
- F** – Concrete (clean and sound)
- G** – LATICRETE MVIS Premium Mortar Bed
- H** – Lath
- I** – Felt or Grade D paper
- J** – SkimCoat with LATICRETE MVIS Thin Brick Mortar or other MVIS Mortar
- K** – CMU (Concrete Masonry Unit)
- L** – Rain Screen
- M** – LATICRETE Masonry Pointing Mortar

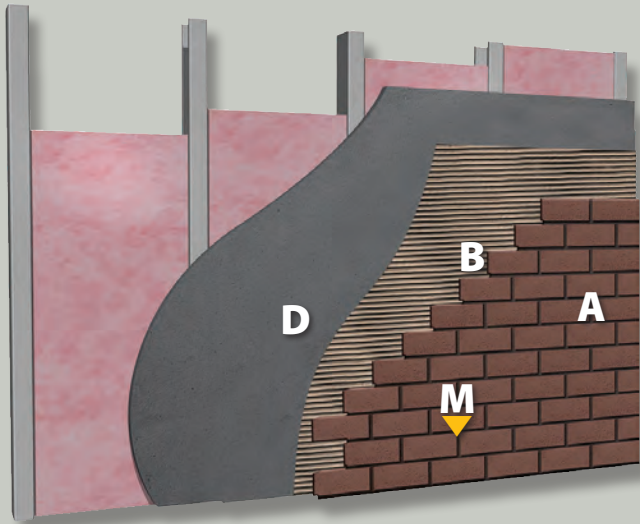


MVIS W202–Exterior–over new clean concrete.



MVIS W221–Exterior–over existing painted concrete or CMU.

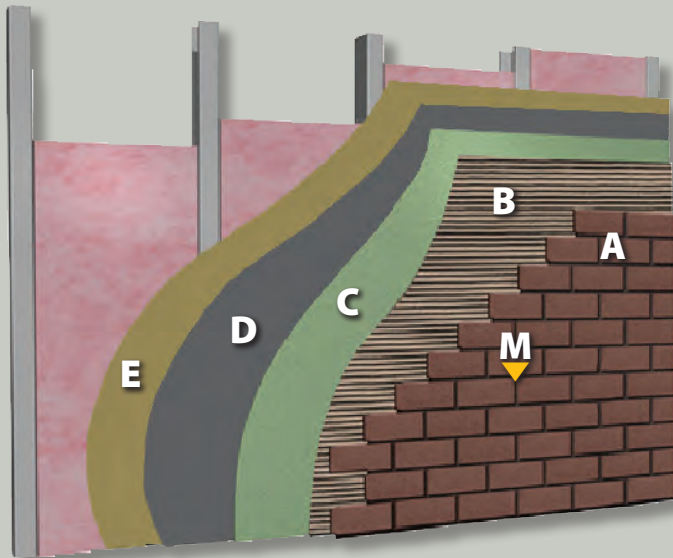
INSTALLATION GUIDELINES



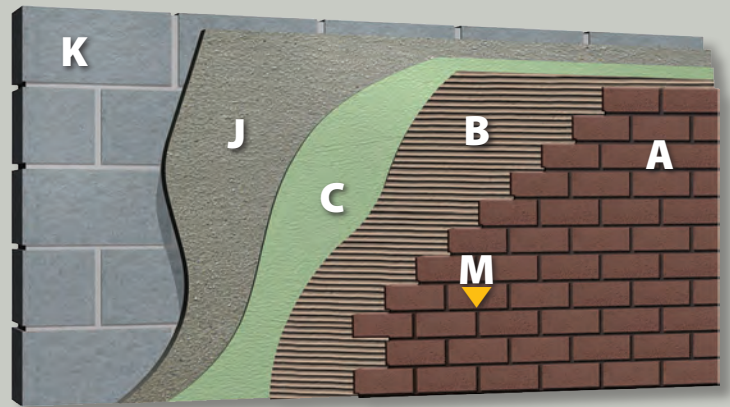
MVIS W244 (I)–Interior–over wood or steel frame.

KEY

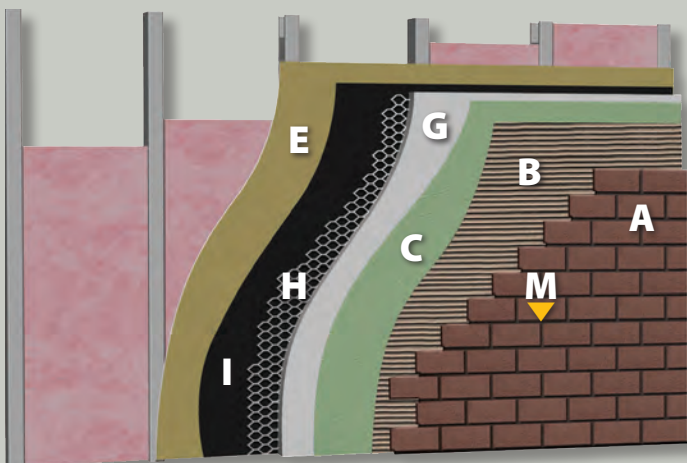
- A** – Thin Brick or Finish Material
- B** – LATICRETE® MVIS Thin Brick Mortar
- C** – LATICRETE MVIS AIR & WATER BARRIER
- D** – Cement Backer Board
- E** – Exterior Grade Rated Sheathing
- F** – Concrete (clean and sound)
- G** – LATICRETE MVIS Premium Mortar Bed
- H** – Lath
- I** – Felt or Grade D paper
- J** – SkimCoat with LATICRETE MVIS Thin Brick Mortar or other MVIS Mortar
- K** – CMU (Concrete Masonry Unit)
- L** – Rain Screen
- M** – LATICRETE Masonry Pointing Mortar



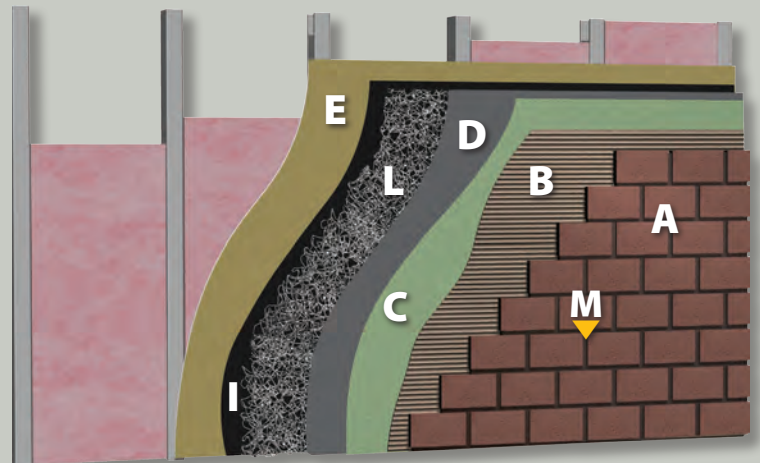
MVIS 244 (E)–Exterior–over wood or steel frame.



MVIS W300–Exterior–over new CMU.



MVIS W265–Exterior alternative.



MVIS W399 (RS)–Exterior–with drainage plane.