

NW HOME & YARD

IDEA BOOK

HOME EXTERIORS

Brick and Slimbrick®
Natural Stone
Cultured Stone
Concrete Masonry Units



MUTUAL MATERIALS®



At Mutual Materials, we are proud of what we do and are inspired to see our products chosen by professionals to build communities. Our products build beauty that lasts through hospitals, schools, stadiums, businesses, family homes, public parks, and backyards. Mutual Materials has long served a professional network of architects, interior designers, builders, masons, and landscape design professionals. Today we also serve residential homeowners, both through our professional networks and through our retail branch locations.



Kendall Anderegg
President, Mutual Materials

A Message from our President

Have you ever spent time looking at your local sports stadium, or your child's school, or even your neighbor's backyard and wondered where the products come from that put it all together? Well, that's what Mutual Materials does – we have been part of building beauty that lasts over one hundred years. Since 1900, we have been providing masonry and hardscape products to customers in the Pacific Northwest to help them create inviting communities that stand the test of time. Our products are used to create schools, stadiums, public landscapes, business parks, family homes and gardens, and much more.

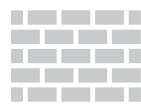
Mutual Materials is also a family business and we locally manufacture the products we sell. From humble beginnings with one brick plant in 1900, we have grown today into a major regional employer operating more than 10 manufacturing plants and 16 branch offices across Washington, Oregon, Idaho, Montana, and British Columbia.

Our Idea Book for Home Exteriors has photos from real homes across the Pacific Northwest. In the back, you will find all of our product styles, shapes, sizes and colors of natural stone veneers, clay bricks, and CMU. You can also find more product details, installation instructions, online shopping and store locations online at www.mutualmaterials.com.

On behalf of the team here at Mutual Materials, we appreciate our customers and thank you for considering our products to build your home and yard improvement projects.

Sincerely,

Kendall Anderegg
President, Mutual Materials



HOMES

Masonry can add distinctive character to any architectural design using elements such as stone, clay brick, and even large size concrete masonry units (CMU). Define your unique style with masonry.

HOME EXTERIOR TRENDS

New improvements in masonry includes lightweight thin brick, natural stone, and faux stone that's easier to install. Popular colors choices are now moving away from the traditional reds and browns found on most masonry exteriors, and moving towards whites, grays, and blacks.

When considering the veneer for your home, you can't go wrong with masonry because it's waterproof, fireproof, insect proof, and structurally solid. Once you have made the decision to go with masonry, you really just need to think about the look you want. Brick and stone are versatile and allow any style from traditional to contemporary.

MASONRY EXTERIOR DESIGNS

- Clay brick is the ultimate masonry choice because of its blend of beauty and function. Colors range from white to black and red to brown.
- Natural stone is quarried directly from the earth and provides a rustic sophistication to your home's veneer.
- Cultured Stone is great choice for a home's exterior because it provides the elegance of natural stone, but it's lighter and easier to install.
- Concrete Masonry Units (CMU) are commonly thought of as a more commercial product, but are becoming a popular choice for new homes because of the clean modern look.

Home Accents: Natural Stone Veneer in Hillside Blend.





1

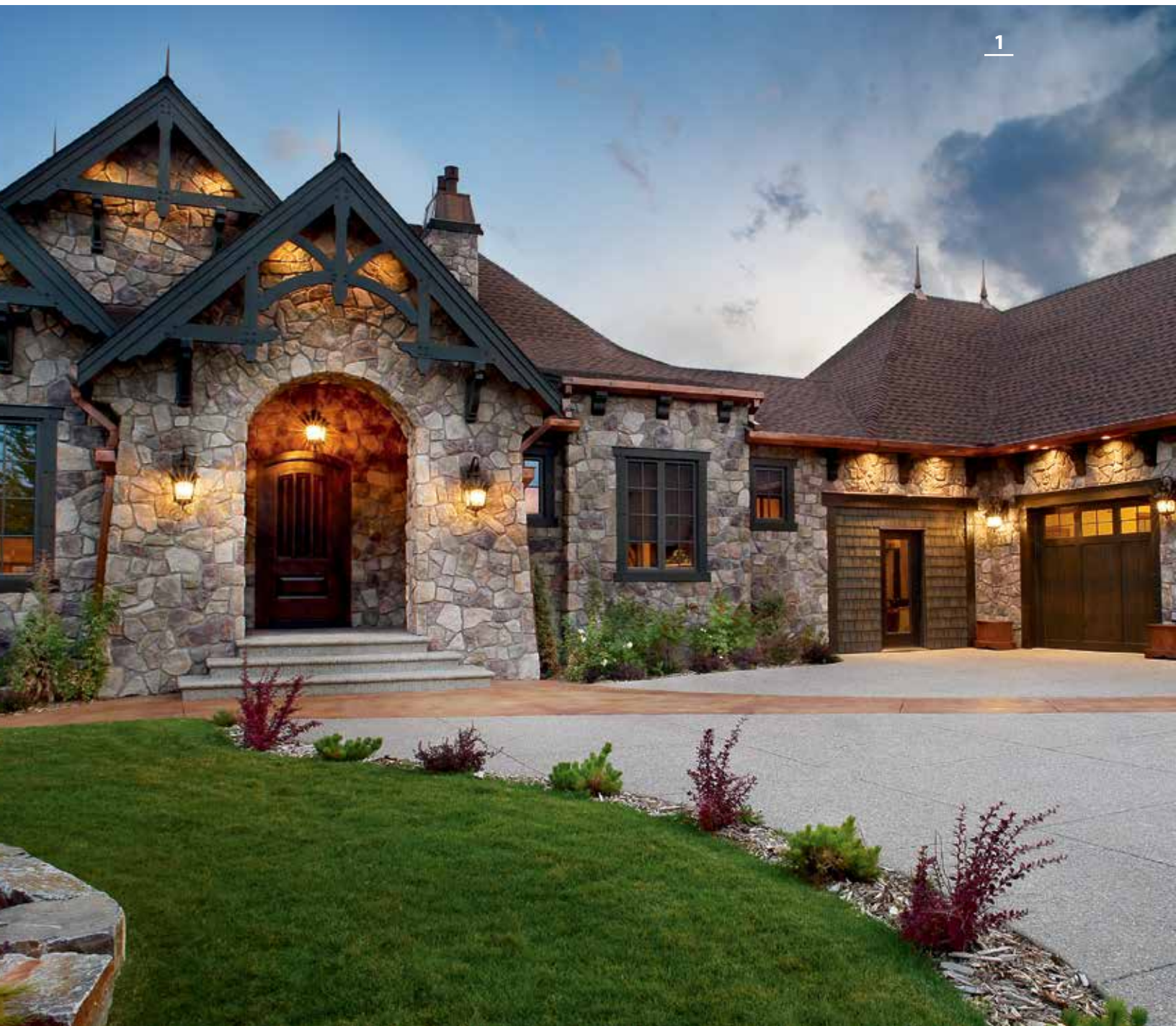
Projects by Belotti + McIntosh Design and Construction Services,
Complete Landscaping, and Holliday Masonry.



1. Home Exterior and Planters: Ground Face Concrete Masonry Units in Charcoal.

2. Entryway: Vancouver Bay Architectural Slabs in Charcoal.





1. Home Exterior: Cultured Stone® Dressed Fieldstone in Bucks Country.

2. Home Accents: Brick in Westport Used.

3. Columns: Brick in Westport Used; Grand Porch: Vancouver Bay Architectural Slabs in Gray (sealed).



Project by JayMarc Homes.



Project by JayMarc Homes.



1



1. Home Exterior: Brick in Mountain Blend.
2. Home Exterior: Brick in Mutual Used and Clinker.
3. Home Exterior: Brick in Cedar Creek.





1. Home Accents: Brick in Clinker.
2. Home Accents: Brick in Ashland Used.
3. Home Exterior: Cultured Stone® Country Ledgestone in Aspen.





1. Home Accents: Concrete Masonry Units in Gray.
2. Home Accents: Cultured Stone® Southern LedgeStone in Loon Lake.
3. Home Exterior: Brick in Coal Creek.





1. Home Accents: Glacier Stone in Canyon Creek & Glacier Mountain.
2. Home Accents: Glacier Stone in Loon Lake
3. Home Accents: Natural Stone Veneer in Cherry Hill.







1. Home Exterior: Natural Stone Veneer in Loon Lake LedgeStone.
2. Home Accents: Cultured Stone® Country LedgeStone in Echo Ridge.



*Shop for Mutual Materials products online at
store.mutualmaterials.com!*





URBAN LIVING

Luxury urban living in the Pacific Northwest features the latest materials and colors, such as dark colored brick, mixed with traditional products and environmentally-friendly designs.

URBAN LIVING DESIGN TRENDS

In the city, building designs vary from neighborhood to neighborhood, block to block. Building exteriors range from steel to wood to glass to brick, depending on whether a designer wants to blend into an area or stand out from the crowd.

Mixed-use buildings or townhomes are often designed with either concrete masonry units (CMU) or brick because of their versatility in appearance and structural performance. While reds have often been the choice for a timeless look, designers are now going with whites and dark colors to bring a contemporary aesthetic to their projects.

URBAN LIVING EXTERIORS

- Concrete Masonry Units (CMU) are usually hidden behind a building's veneer, but now smooth (or ground faced) units are being showcased on exteriors because of their clean, modern look.
- Face brick is fireproof, insect-proof, and provides excellent thermal performance, in different shades of red, brown, yellow, white, gray, and black.
- If your project requires the look of brick but is encountering some issues with weight of a full-size unit on higher elevations, consider Slimbrick, a half-inch brick that can be installed over any substructure and give you the look of brick you need.



1. Building Exterior: Slimbrick® in Teal Brown, Tan Terra, and Brown Varitone.
2. Building Exterior: Brick in Castle Gray, Wheat, Goldenrod, and Seattle Cream.



1. Column: Slimbrick® in Ebony.
2. Column: Forest Blend.
3. Building Accent: Slimbrick® in Ebony.
4. Building Exterior: Brick in Mauna Loa.





Building Exterior: Ground Face Concrete Masonry Units in Castle White and Charcoal; Split Face Concrete Masonry Units in Burgundy Red.







1. Building Exterior: Cultured Stone® in Echo Ridge Southern LedgeStone.
2. Building Exterior: Brick in Covington.
3. Building Exterior: Brick in Imperial Red.
4. Building Exterior: Ground Face Concrete Masonry Units in Khaki and Charcoal .

EXTERIORS

PRODUCT GUIDE CONTENTS

The following pages list the wide range of styles, sizes and colors of our paving products.

For more product information, project ideas and inspiration, and other resources, visit our website at www.MutualMaterials.com.

Face Brick Stocking Color Selections.....	28–29
Slimbrick® Craftsman Color Selections.....	30
Glazed Slimbrick® Color Selections.....	31
CMU Color Selections	32–33
Cultured Stone® Color Selections	34–36
Natural Stone	37–39
Frequently Asked Questions	40–41
Project Worksheet	42–43

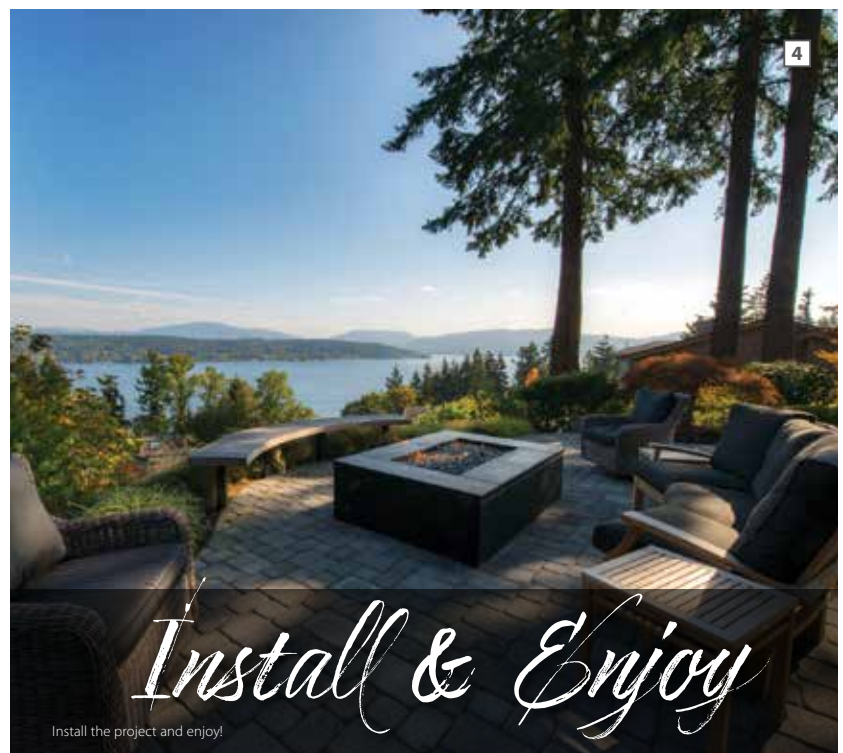
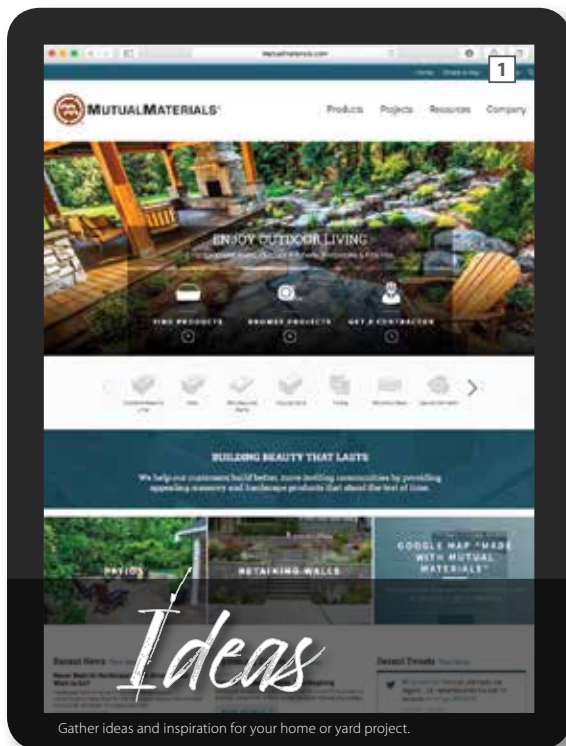


BRING YOUR VISION TO LIFE

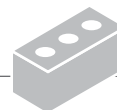
From ideas and inspiration, to product selection, then finding installation professionals, Mutual Materials is here to help our customers build beauty that lasts in their homes and yards.

Professional Services

- As a manufacturer, Mutual Materials does not offer design or installation services directly, but we know who does. Our professional network includes architects, designers, builders, and landscape professionals.
- Our Contractor Connect Program matches your project with multiple contractors. You work directly with the company of your choice. Call Contractor Connect at 1-800-548-8452.



FACE BRICK COLOR SELECTIONS*



Whites & Grays



Redondo Gray - Mission ■

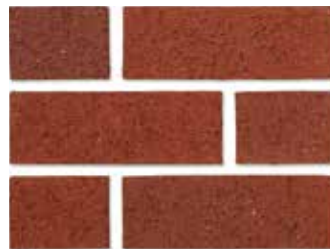


Redondo Gray - Smooth ■

Reds & Browns



Autumn Blend - Smooth ●



Inca - Mission ■



Inca - Smooth ■



Mountain Blend - Mission ●



Mountain Blend - Smooth ●



Forest Blend - Mission ●

Traditional Reds & Browns



Cedar Creek ●



Homestead Used ●



Old University ■



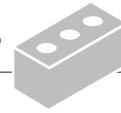
Pacific Handmold ●



Vancouver Used ●

Plant key: ● = Columbia ■ = Mica

FACE BRICK COLOR SELECTIONS*



Traditional Pastels



Canyon Mist ■



Harbor Mist ■



Ashland ●



Cascade Spice ●



Chateau Gray ■

Traditional Iron Wash



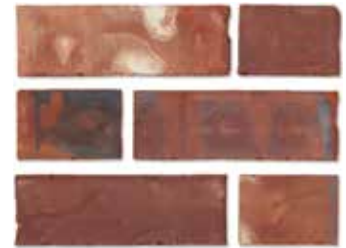
Clinker ●



Coal Creek ●



Covington ●



Sheffield ●

Traditional Iron Wash



Windsor ●

Traditional Tumbled Used



Classic Used ■



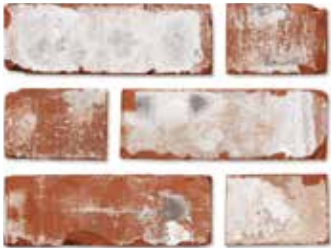
Mutual Used ●



Westport Used ■

Plant key: ● = Columbia ■ = Mica

SLIMBRICK® CRAFTSMAN COLOR SELECTIONS



Ashland Used ■



Canyon Mist ■



Chateau Gray ■



Classic Used ■



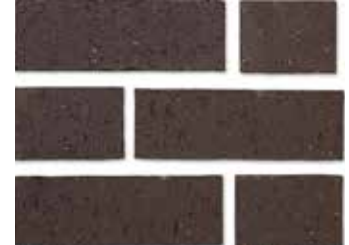
Coal Creek ●



Coffee House ●



Covington ●



Ebony - Slimbrick Texture ■



Forest Blend ●



Inca - Slimbrick Texture ■



Mutual Used ●



Old University ■



Westport Used ■

Plant key: ● = Columbia ■ = Mica

SLIMBRICK® GLAZED COLOR SELECTIONS



SLIMBRICK® Glazed Gloss



Parchment ■



Smoke ■



Shadow ■



Onyx ■



Picket Fence ■



Sand ■

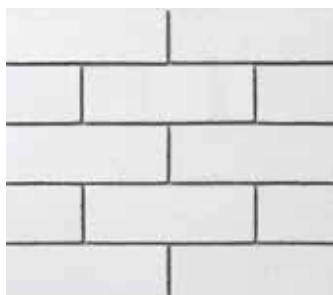


Tweed ■



Cobalt ■

SLIMBRICK® Glazed Matte



Powder ■



Ash ■



Carbon ■



Cranberry ■

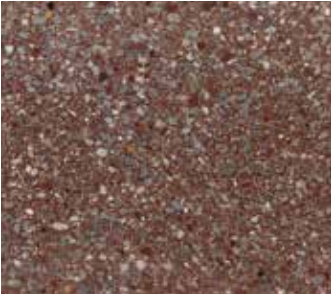
Plant key: ● = Columbia ■ = Mica



Shop for Mutual Materials products online at store.mutualmaterials.com!



Ground Face CMU



Burgundy Red Ground Face



Cocoa Ground Face



Rose Brown Ground Face



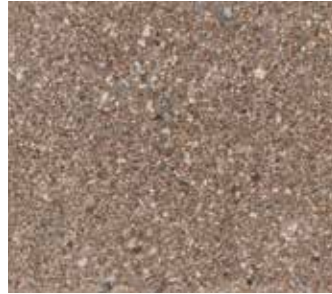
Burnt Orange Ground Face



Deep Plum Ground Face



Khaki Ground Face



Mesa Tan Ground Face



**Sandstone Ground Face
(Premium)**



Mountain Brown Ground Face



Driftwood Ground Face



Natural Ground Face



Sable Ground Face



Onyx Ground Face (Premium)



Charcoal Ground Face



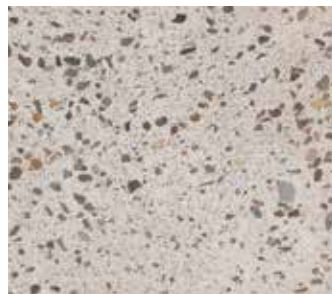
Willow Ground Face



**Castle White Ground Face
(Premium)**



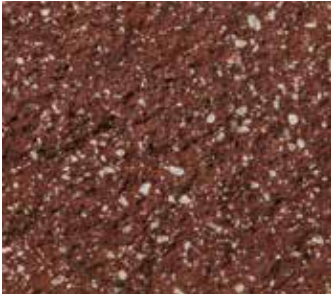
**Winter Sky Ground Face
(Premium)**



Birch Ground Face (Premium)



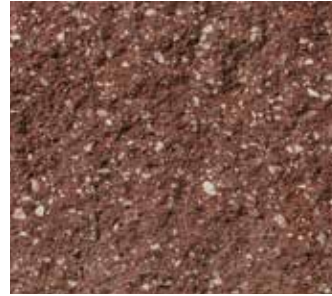
Split Face CMU



Burgundy Red Split Face



Cocoa Split Face



Rose Brown Split Face



Burnt Orange Split Face



Deep Plum Split Face



Khaki Split Face



Mesa Tan Split Face



**Sandstone Split Face
(Premium)**



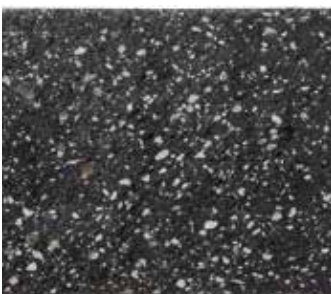
Mountain Brown Split Face



Driftwood Split Face



Natural Split Face



Sable Split Face



Onyx Split Face (Premium)



Charcoal Split Face



Willow Split Face



**Castle White Split Face
(Premium)**



**Winter Sky Split Face
(Premium)**



Birch Split Face (Premium)



Cobblefield®



Cobblefield®—Gray



Cobblefield—San Francisco

Country Ledgestone



Country Ledgestone—Ashfall



Country Ledgestone—Aspen

Country Ledgestone



Country Ledgestone—
Black Rundle



Country Ledgestone—
Bucks County



Country Ledgestone—
Chardonnay



Country Ledgestone—
Eucalyptus



Country Ledgestone—
Echo Ridge™



Country Ledgestone—
Hudson Bay



Country Ledgestone—Skyline



Country Ledgestone—
Umber Creek



Country Ledgestone—Wolf Creek

Fieldstone



Dressed Fieldstone—Aspen



Dressed Fieldstone—Bucks County



Dressed Fieldstone—Chardonnay



Dressed Fieldstone—Echo Ridge



Southern Ledgestone



Southern Ledgestone—Aspen



Southern Ledgestone—
Bucks County



Southern Ledgestone—
Chardonnay



Southern Ledgestone—
Echo Ridge

European Castle Stone



European Castle Stone—
Bucks County



European Castle Stone—
Chardonnay

Limestone



Limestone—Bucks County



Limestone—Chardonnay

Del Mare Ledgestone



Del Mare Ledgestone—Black Isle

Hewn Stone™



Hewn Stone™—Talus

River Rock & Stream Stone



River Rock—Lake Tahoe



Stream Stone—Spring

ProStone®



Easy Fit Savannah Ledgestone—
Vintage Wine



Easy Fit Savannah Ledgestone—
Glacier Valley



Ledgestone—Charcoal Mist



Ledgestone—Vintage Wine



Pro-Fit® Alpine Ledgestone



ProFit® Alpine Ledgestone—
Black Mountain



ProFit® Alpine Ledgestone—
Chardonnay



ProFit® Alpine Ledgestone—
Echo Ridge



ProFit® Alpine Ledgestone—
Pheasant

Pro-Fit® Terrain Ledgestone



ProFit® Terrain Ledgestone—
Arcadia



ProFit® Terrain Ledgestone—
Arctic



ProFit® Terrain Ledgestone—
Ethos Ridge



ProFit® Terrain Ledgestone—
Trek

Pro-Fit® Ledgestone



ProFit® Ledgestone—Gray



ProFit® Ledgestone—Shale



ProFit® Ledgestone—
Southwest Blend

Pro-Fit® Modera



ProFit® Modera—Carbon



ProFit® Modera—Vellum



Full Stone Random Veneer



Cabinet Gorge Castle Ledge



Camas A-Split



Montana Mossy Random



Montana Mix Random

Full Stone Random Veneer



Rocky Mountain Split Random



Camas Squares & Recs



Montana Mix Squares & Recs



Sage Hill Squares & Recs

Full Stone Squares & Recs

Ledgestone



Cabinet Gorge



Elk Mountai



Montana Mix



Sage Hill

River Rock



Montana Gold Cobbles



Oregon River Rock



Rainbow Cobbles



Rainbow River Rock
Mason's Rustic Blend

Flagstones



Black Treads



Blue Stone Tumbled



Blue Stone Treads



Blue Stone Variegated Pre-Cut

* Mutual Materials offers a wide variety of natural stone. These images are representative of offerings, but may not be complete. If you are seeking natural stone, give us a call or stop in to a branch so that we can help you find the ideal stone for your project.



Flagstones



Iron Mountain



Lavender



Lone Pine Gold



Mahogany



Mica Slate Charcoal



Mica Slate Birch Creek



Mountain Valley Flagstone



Mountain Valley Squares & Recs



Variegated 1-2

Thin Stone Panels



Autumn Horizon Craftsman



Autumn Horizon Ledgestone Light



Placer Gold Craftsman



Placer Gold Ledgestone Light



Rocky Mountain Ledgestone Light

* Mutual Materials offers a wide variety of natural stone. These images are representative of offerings, but may not be complete.
If you are seeking natural stone, give us a call or stop in to a branch so that we can help you find the ideal stone for your project.



Flagmats



Autumn Horizon Flagmats



Placer Gold Flagmats

Thin Natural Stone Veneer



Autumn Horizon



Bear Mountain



Bitterroot Natural LedgeStone



Black Horse



Canyon Creek Natural LedgeStone



Cherry Hill



Choctaw Dark



Choctaw Light Tumbled

Thin Natural Stone Veneer



Farmers



Glacier Mountain LedgeStone



Hillside Blend



Jericho



Loon Lake LedgeStone



Mountain Valley Natural



Rocky Mountain Moss

* Mutual Materials offers a wide variety of natural stone. These images are representative of offerings, but may not be complete. If you are seeking natural stone, give us a call or stop in to a branch so that we can help you find the ideal stone for your project.

FREQUENTLY ASKED QUESTIONS

Can I install my own project even if I've never done this sort of work before?

Yes you can. Use the installation instructions, design ideas, and tips on our website www.mutualmaterials.com to guide your project.

What type of maintenance do Mutual Materials pavers require?

Our pavers require minimal maintenance. Simply pressure wash or use a leaf blower on your project approximately once per year. You may need to sweep more sand into the joints after pressure washing.

Do I need to seal my pavers?

No. However, sealers do offer 3 key benefits:

- 1) Sealers help resist penetrating stains.
- 2) Sealers enhance the color.
- 3) Certain types of sealers can bind the sand particles in the joints reducing the ability of weeds to generate.

Will weeds grow between my pavers?

Weeds and grass may start to grow between your pavers from seeds and spores blown in by the wind. When this happens you can easily pull them out or use a spot weed killer, or herbicide - it won't damage the pavers.

What is the white haze or powder on the pavers?

This is known as efflorescence. All concrete products contain cement which produces water-soluble calcium oxide. Calcium oxide inside the pavers reacts with water and—when carried to the surface through capillaries—reacts with carbon dioxide to form a haze of calcium carbonate. It is a natural process and will wear off in time. The amount of efflorescence is difficult to predict but it does eventually go away. Some specially-formulated cleaners may also be used to wash away efflorescence.

What do I do if my pavers become stained?

One of the great benefits to concrete pavers is that the individual stained or damaged pavers can be removed and replaced. Remove the sand around the paver(s) and then use two flat-head screwdrivers to lift them out. It's a good idea to keep a few extra pavers in your shed or garage for just this need.

How tall can I build my retaining wall?

The maximum height you can build your wall depends on the retaining wall block you have chosen. The maximum heights for our walls are:

- ManorStone - 3' 6"
- CypressStone - 4'
- Roman Cypress - 4'
- CornerStone: 50 Series - 3'; 100 Series - 4'; 200 Series - 6'

Do I have to bury part of the bottom course of my wall?

Retaining wall blocks need to be securely anchored in the ground. If your wall is three (3) courses or fewer tall, we recommend you bury half of the bottom layer. If your wall is four (4) courses or more tall (up to the maximum recommended height), we recommend burying the entire bottom layer.

If I'm building terraces, how far apart should they be?

The distance between terraces (face of wall to face of wall) should be at least two times the lower wall height. For example, if your lower wall is 2 feet tall, you need to go back 4 feet before building your next wall.

What are the advantages of Mutual Materials retaining wall blocks versus using landscape timbers?

Our retaining wall units are available in a variety of styles and colors to blend with your home's exterior. And unlike products made from untreated wood which rot, warp, and become insect and rodent motels, our products are made to be durable, flexible and timeless.

Will the color vary between runs of products?

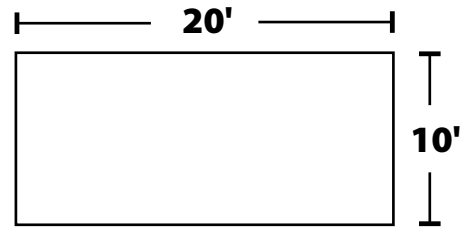
Color may vary from one run to the next. It is best to buy all the product for a project at once. We recommend mixing product from different pallets in order to get a more consistent color in your project. This is also known as blending pallets.

PROJECT WORKSHEETS

PAVING STONE PROJECT

STEP A: Find total square footage

1. Make a drawing of your project (to 1 inch scale if possible).
2. Choose your stone shape and color.
3. Find the total square footage of your project using Step B below.
4. Locate your stone square footage on the product price label.



STEP B: Formula to determine stones for the project

1. Multiply the length by the width to get the total square footage of the project.

_____ Length in feet **X** _____ Length in feet **=** _____ Total square feet

2. Multiply the total square footage of the project by square footage of the stone you chose.

_____ Sq. ft. **X** _____ Sq. ft. per stone **=** _____ Total stones needed
 (calculated above) (calculated on price labels)

RETAINING WALL PROJECT

How many stones do I buy? 4" x 12" Wall Block

(Stones required per square foot of wall surface area)

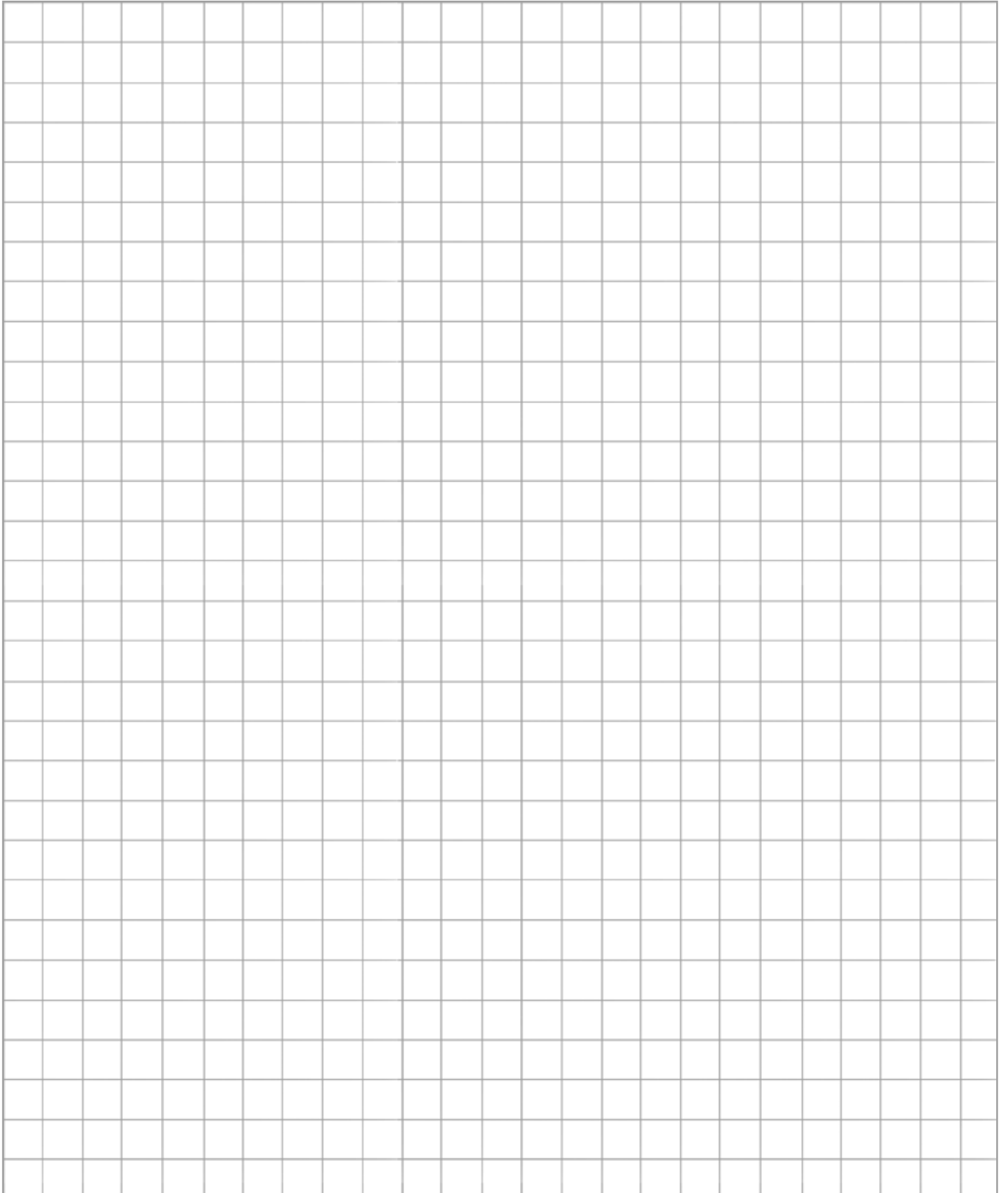
# of Courses	Wall Height	5'	10'	15'	20'	25'
1	4"	5	10	15	20	25
2	8"	10	20	30	40	50
3	12"	15	30	45	60	75
4	16"	20	40	60	80	100
5	20"	25	50	75	100	125
6	24"	30	60	90	120	150

How many stones do I buy? 6" x 16" Wall Block

(Stones required per square foot of wall surface area)

# of Courses	Wall Height	5'	10'	15'	20'	25'
1	4"	4	8	12	15	19
2	12"	8	16	24	30	38
3	18"	12	24	36	45	57
4	24"	16	32	48	60	76
5	30"	32	48	60	75	95
6	36"	24	48	72	90	114

PROJECT WORKSHEETS



PROJECT WORKSHEETS

This image shows a full page of blank graph paper. The grid consists of thin, light gray horizontal and vertical lines that intersect to form a uniform pattern of small squares across the entire surface. There are no margins, text, or other markings on the paper.

BUILDING BEAUTY THAT LASTS



Back Cover: Brick In Mountain Blend.
Front Cover: Brick In Coal Creek.

Connect with Us!

Visit our website and social media sites

www.MutualMaterials.com

Shop online at store.mutualmaterials.com



Cultured Stone is a registered trademark of Boral.
All other trademarks used herein are property of Mutual Materials Co.
© 2018 Mutual Materials