

NW HOME & YARD

# IDEA BOOK

HOME  
INTERIORS

Brick and Slimbrick®  
Natural Stone  
Cultured Stone





At Mutual Materials, we are proud of what we do and are inspired to see our products chosen by professionals to build communities. Our products build beauty that lasts through hospitals, schools, stadiums, businesses, family homes, public parks, and backyards. Mutual Materials has long served a professional network of architects, interior designers, builders, masons, and landscape design professionals. Today we also serve residential homeowners, both through our professional networks and through our retail branch locations.



**Kendall Anderegg**  
*President, Mutual Materials*

### **A Message from our President**

Have you ever spent time looking at your local sports stadium, or your child's school, or even your neighbor's backyard and wondered where the products come from that put it all together? Well, that's what Mutual Materials does – we have been part of building beauty that lasts over one hundred years. Since 1900, we have been providing masonry and hardscape products to customers in the Pacific Northwest to help them create inviting communities that stand the test of time. Our products are used to create schools, stadiums, public landscapes, business parks, family homes and gardens, and much more.

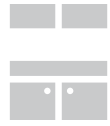
Mutual Materials is also a family business and we locally manufacture the products we sell. From humble beginnings with one brick plant in 1900, we have grown today into a major regional employer operating more than 10 manufacturing plants and 16 branch offices across Washington, Oregon, Idaho, Montana, and British Columbia.

Our Idea Book for Brick & Stone Home Interiors has photos from real homes across the Pacific Northwest. In the back, you will find all of our product styles, shapes, sizes and colors of natural stone veneers, Cultured Stone®, and clay bricks. You can also find more product details, installation instructions, online shopping and store locations online at [www.mutualmaterials.com](http://www.mutualmaterials.com).

On behalf of the team here at Mutual Materials, we appreciate our customers and thank you for considering our products to build your home and yard improvement projects.

Sincerely,

**Kendall Anderegg**  
*President, Mutual Materials*



# INTERIORS

It's common to think of brick houses when masonry is brought up, but it is a tremendous choice for a home's interior as well. Because of masonry's thermal performance, LEED benefits, and aesthetic value, it provides a holistic design for your home.

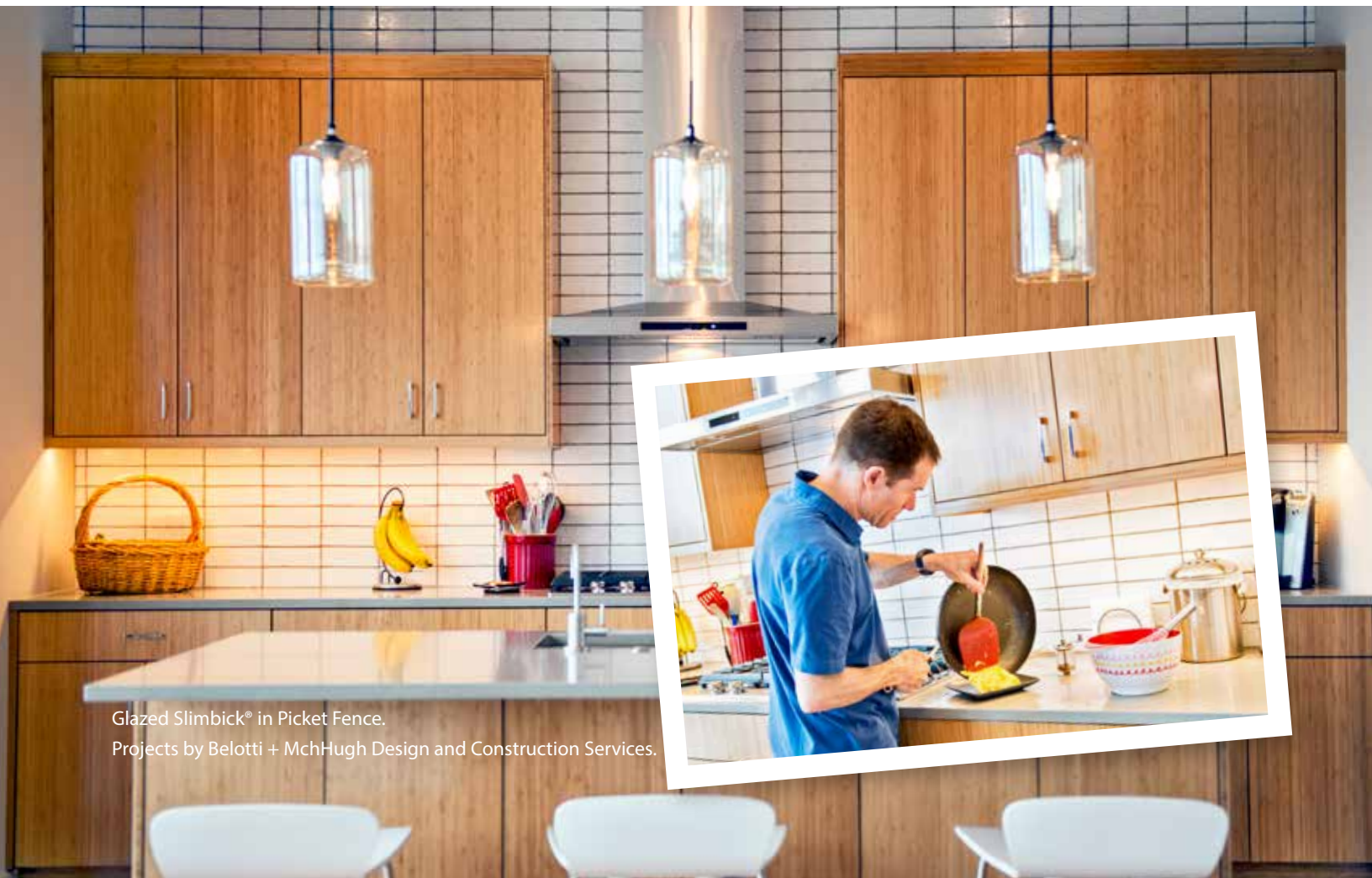
## HOME INTERIOR TRENDS

Both brick and stone are becoming more popular choices for use in the home. Thin brick is increasingly used to create backsplashes or exposed brick accent walls. Natural stone is trending because it brings the rustic look of a home's exterior through to the inside of a home. More consumers are requesting brick colors in whites and blacks to differentiate their projects from the traditional reds and browns.

Whether you want a more rustic, traditional look or a modern design, you will want to factor in your home's exterior so the inside and out complement one another.

## MASONRY INTERIOR DESIGNS

- Slimbrick is a great choice for accent walls or backsplashes because its texture and color offers visual character different from standard tile.
- If you have natural stone on your exterior, you can achieve a seamless design by using it on your interiors as well.
- Cultured Stone is great choice for a home's interior because it provides the elegance of natural stone, but it's lighter and easier to install. Plus, it comes with a 50-year warranty.



Glazed Slimbrick® in Picket Fence.  
Projects by Belotti + MchHugh Design and Construction Services.







1. Stove Hood and Backsplash: Cultured Stone® Country Ledgestone in Aspen.

2. Backsplash: Glazed Slimbrick® in Shadow.





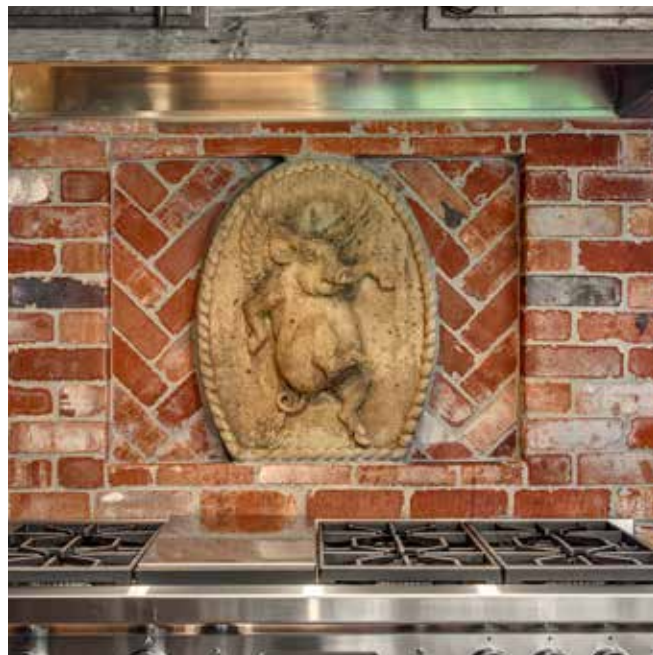


1. Backsplash: Glazed Slimbrick® in Onyx.
2. Backsplash: Glazed Slimbrick® in Picket Fence.
3. Backsplash: Glazed Slimbrick® in Cranberry.





Projects by ACH Design.



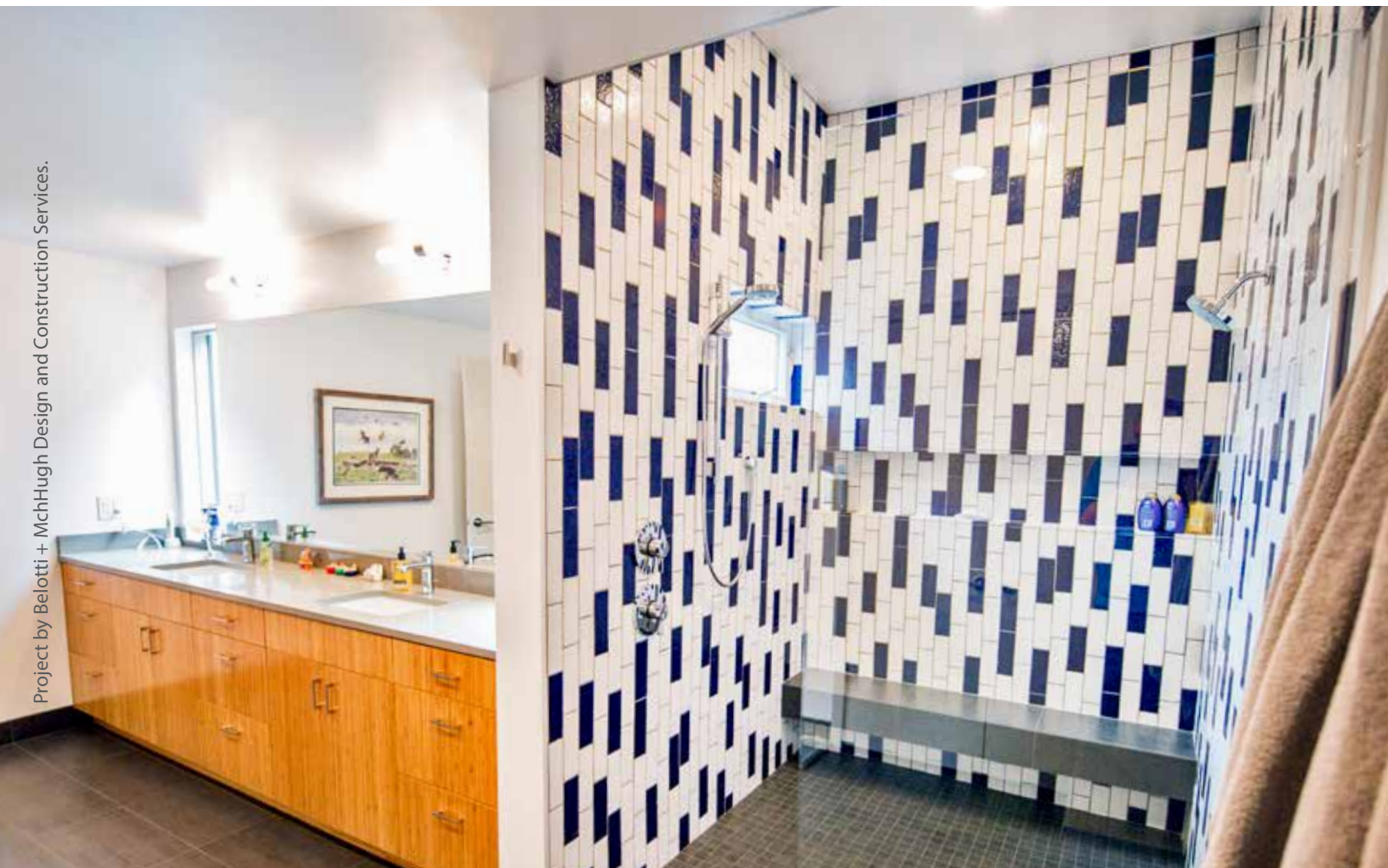
Farmhouse Kitchen and Details:  
Slimbrick® in Mutual Used.





Powder Room: Slimbrick® in Mutual Used.





Walk-In Shower: Glazed Slimbrick® in Picket Fence and Cobalt.



Shop for Mutual Materials products online at [store.mutualmaterials.com](https://store.mutualmaterials.com)!





Project by Polygon Homes.



1. Accent Wall: Slimbrick® in Canyon Mist.

2. Accent Wall: Slimbrick® in Covington.



Stove Hood, Bathtub Surround, Home Accents, and Walls:  
Cultured Stone® Country LedgeStone in Aspen.





Fireplace in Cultured Stone®  
Pro-Fit® Terrain LedgeStone-Trek









1. Accent Wall: Cultured Stone® Southern Ledgestone  
in Fog.
2. Accent Wall: Cultured Stone® Country Ledgestone  
in Black Rundle.
3. Accent Wall: Cultured Stone® Country Ledgestone  
in Chardonnay.









1. Fireplace: Cultured Stone® Ledgestone in Bucks County.

2. Fireplace: Glazed Slimbrick® in Picket Fence.









1. Fireplace: Cultured Stone® Limestone in Chardonay.
2. Fireplace: Cultured Stone® Country Ledgestone in Aspen.
3. Fireplace: Cultured Stone® Southern Ledgestone in Echo Ridge.









# URBAN INTERIORS

Masonry is often chosen for its structural performance, but its versatility in sizes, textures, and colors, make it shine in interior spaces.

## URBAN LIVING DESIGN TRENDS

When one thinks of a masonry use in the city, a brownstone or row house probably comes to mind, with their classic brick facades. However, the use of masonry on urban interiors is making a comeback. From lofts to restaurants to office space, masonry is getting a chance to shine again.

Local designers are getting creative with masonry in their latest projects. We're seeing the use of thin brick on interiors to get both an industrial or contemporary look on accent walls or entire rooms. Natural stone and Cultured Stone are both appearing in some urban interiors on fireplace surrounds. And glazed thin brick is being used for backsplashes for designers wanting a new look other than tile.

## URBAN LIVING INTERIORS

- Our Slimbrick® provides the designer with the look of regular clay brick in a lightweight, easy-to-install format, allowing it to be incorporated into interior design. Slimbrick is a great choice for accent walls or backsplashes because its texture and color offers visual character different from standard tile. Since it's only ½" thick, it's also easy to install.
- Glazed Slimbrick is similar but has a fire-glazed finish making it a new alternative to traditional tile on backsplashes or in showers. It comes in a range of colors with either a matte or glossy finish.
- Some clients still want a rustic touch in an urban setting. Natural stone and Cultured Stone can meet this need on columns, fireplaces or entryways.



1. Fireplace: Natural Stone in Montana LedgeStone.

2. Wall: Slimbrick® in Ashland Used.









2



3

1. Walls: Natural Slimbrick in Ashland Used.
2. Walls: Natural Slimbrick in Coal Creek.
3. Backsplash: Glazed Slimbrick in Sand Gloss.



# INTERIORS

## PRODUCT GUIDE CONTENTS

*The following pages list the wide range of styles, sizes and colors of our paving products.*

*For more product information, project ideas and inspiration, and other resources, visit our website at [www.MutualMaterials.com](http://www.MutualMaterials.com).*

Face Brick Stocking Color Selections..... 26–27

Slimbrick® Craftsman Color Selections.....28

Glazed Slimbrick® Color Selections.....29

Cultured Stone® Color Selections..... 30-32

Natural Stone ..... 33–35

Frequently Asked Questions ..... 36–37

Project Worksheet ..... 38–39

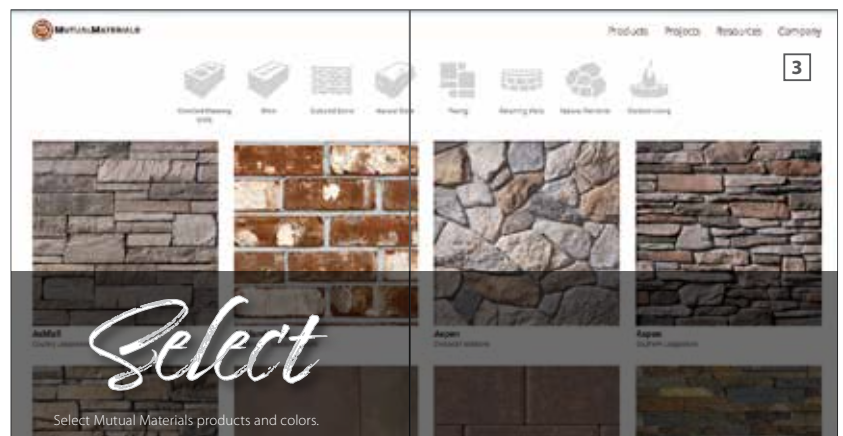
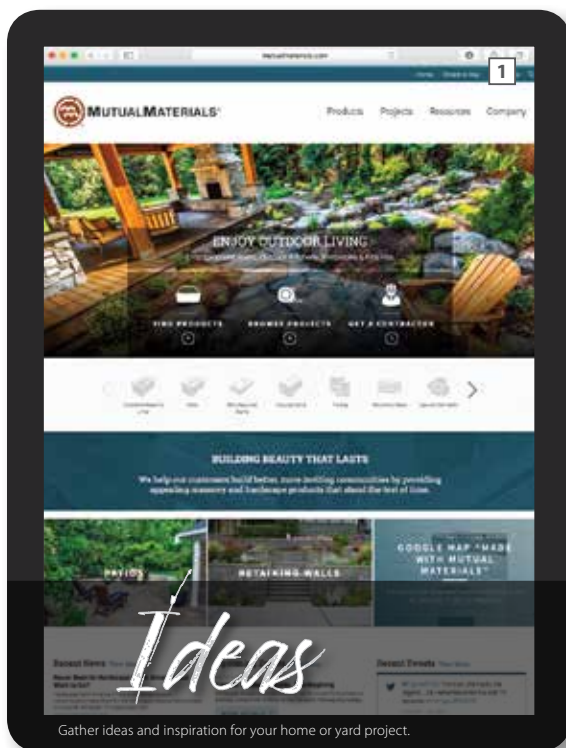


# BRING YOUR VISION TO LIFE

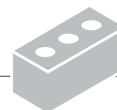
From ideas and inspiration, to product selection, then finding installation professionals, Mutual Materials is here to help our customers build beauty that lasts in their homes and yards.

## Professional Services

- As a manufacturer, Mutual Materials does not offer design or installation services directly, but we know who does. Our professional network includes architects, designers, builders, and landscape professionals.
- Our Contractor Connect Program matches your project with multiple contractors. You work directly with the company of your choice. Call Contractor Connect at 1-800-548-8452.



# FACE BRICK COLOR SELECTIONS\*



## Whites & Grays



Redondo Gray - Mission ■

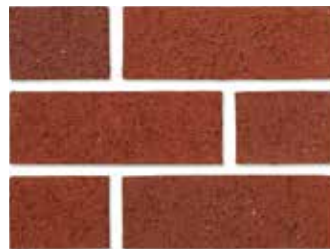


Redondo Gray - Smooth ■

## Reds & Browns



Autumn Blend - Smooth ●



Inca - Mission ■



Inca - Smooth ■



Mountain Blend - Mission ●



Mountain Blend - Smooth ●



Forest Blend - Mission ●

## Traditional Reds & Browns



Cedar Creek ●



Homestead Used ●



Old University ■



Pacific Handmold ●

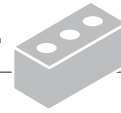


Vancouver Used ●

Plant key: ● = Columbia ■ = Mica



# FACE BRICK COLOR SELECTIONS\*



## Traditional Pastels



Canyon Mist ■



Harbor Mist ■



Ashland ●



Cascade Spice ●



Chateau Gray ■

## Traditional Iron Wash



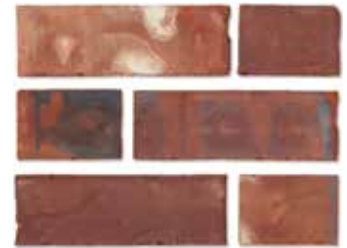
Clinker ●



Coal Creek ●



Covington ●



Sheffield ●

## Traditional Iron Wash



Windsor ●

## Traditional Tumbled Used



Classic Used ■



Mutual Used ●

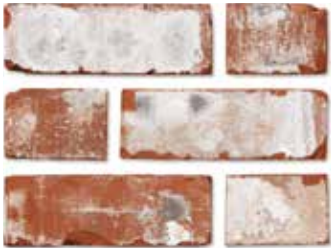


Westport Used ■

Plant key: ● = Columbia ■ = Mica



# SLIMBRICK® CRAFTSMAN COLOR SELECTIONS



**Ashland Used** ■



**Canyon Mist** ■



**Chateau Gray** ■



**Classic Used** ■



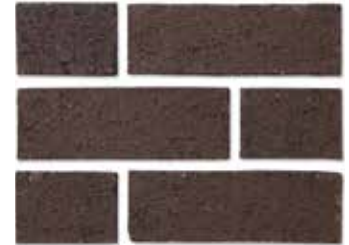
**Coal Creek** ●



**Coffee House** ●



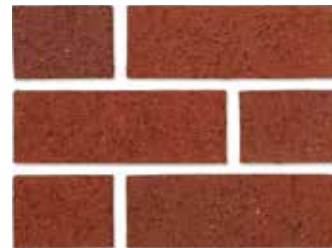
**Covington** ●



**Ebony - Slimbrick Texture** ■



**Forest Blend** ●



**Inca - Slimbrick Texture** ■



**Mutual Used** ●



**Old University** ■



**Westport Used** ■

Plant key: ● = Columbia ■ = Mica



# SLIMBRICK® GLAZED COLOR SELECTIONS



## SLIMBRICK® Glazed Gloss



Parchment ■



Smoke ■



Shadow ■



Onyx ■



Picket Fence ■



Sand ■

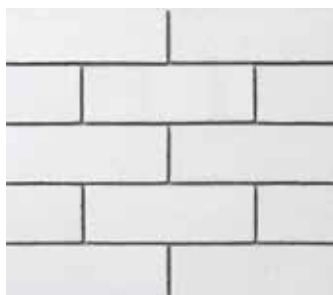


Tweed ■



Cobalt ■

## SLIMBRICK® Glazed Matte



Powder ■



Ash ■



Carbon ■



Cranberry ■

Plant key: ● = Columbia ■ = Mica



Shop for Mutual Materials products online at [store.mutualmaterials.com](http://store.mutualmaterials.com)!





## Cobblefield®



Cobblefield®—Gray



Cobblefield—San Francisco

## Country Ledgestone



Country Ledgestone—Ashfall



Country Ledgestone—Aspen

## Country Ledgestone



Country Ledgestone—  
Black Rundle



Country Ledgestone—  
Bucks County



Country Ledgestone—  
Chardonnay



Country Ledgestone—  
Eucalyptus



Country Ledgestone—  
Echo Ridge™



Country Ledgestone—  
Hudson Bay



Country Ledgestone—Skyline



Country Ledgestone—  
Umber Creek



Country Ledgestone—Wolf Creek

## Fieldstone



Dressed Fieldstone—Aspen



Dressed Fieldstone—Bucks County



Dressed Fieldstone—Chardonnay



Dressed Fieldstone—Echo Ridge



## Southern Ledgestone



Southern Ledgestone—Aspen



Southern Ledgestone—  
Bucks County



Southern Ledgestone—  
Chardonnay



Southern Ledgestone—  
Echo Ridge

## European Castle Stone



European Castle Stone—  
Bucks County



European Castle Stone—  
Chardonnay

## Limestone



Limestone—Bucks County



Limestone—Chardonnay

## Del Mare Ledgestone



Del Mare Ledgestone—Black Isle

## Hewn Stone™



Hewn Stone™—Talus

## River Rock & Stream Stone



River Rock—Lake Tahoe



Stream Stone—Spring

## ProStone®



Easy Fit Savannah Ledgestone—  
Vintage Wine



Easy Fit Savannah Ledgestone—  
Glacier Valley



Ledgestone—Charcoal Mist



Ledgestone—Vintage Wine





## Pro-Fit® Alpine Ledgestone



ProFit® Alpine Ledgestone—  
Black Mountain



ProFit® Alpine Ledgestone—  
Chardonnay



ProFit® Alpine Ledgestone—  
Echo Ridge



ProFit® Alpine Ledgestone—  
Pheasant

## Pro-Fit® Terrain Ledgestone



ProFit® Terrain Ledgestone—  
Arcadia



ProFit® Terrain Ledgestone—  
Arctic



ProFit® Terrain Ledgestone—  
Ethos Ridge



ProFit® Terrain Ledgestone—  
Trek

## Pro-Fit® Ledgestone



ProFit® Ledgestone—Gray



ProFit® Ledgestone—Shale



ProFit® Ledgestone—  
Southwest Blend

## Pro-Fit® Modera



ProFit® Modera—Carbon



ProFit® Modera—Vellum



## Full Stone Random Veneer



Cabinet Gorge Castle Ledge



Camas A-Split



Montana Mossy Random



Montana Mix Random

## Full Stone Random Veneer



Rocky Mountain Split Random



Camas Squares & Recs



Montana Mix Squares & Recs



Sage Hill Squares & Recs

## Full Stone Squares & Recs

## Ledgestone



Cabinet Gorge



Elk Mountai



Montana Mix



Sage Hill

## River Rock



Montana Gold Cobbles



Oregon River Rock



Rainbow Cobbles



Rainbow River Rock  
Mason's Rustic Blend

## Flagstones



Black Treads



Blue Stone Tumbled



Blue Stone Treads



Blue Stone Variegated Pre-Cut

\* Mutual Materials offers a wide variety of natural stone. These images are representative of offerings, but may not be complete. If you are seeking natural stone, give us a call or stop in to a branch so that we can help you find the ideal stone for your project.





## Flagstones



**Iron Mountain**



**Lavender**



**Lone Pine Gold**



**Mahogany**



**Mica Slate Charcoal**



**Mica Slate Birch Creek**



**Mountain Valley Flagstone**



**Mountain Valley Squares & Recs**



**Variegated 1-2**

## Thin Stone Panels



**Autumn Horizon Craftsman**



**Autumn Horizon Ledgerstone Light**



**Placer Gold Craftsman**



**Placer Gold Ledgerstone Light**



**Rocky Mountain Ledgerstone Light**

\* Mutual Materials offers a wide variety of natural stone. These images are representative of offerings, but may not be complete.  
If you are seeking natural stone, give us a call or stop in to a branch so that we can help you find the ideal stone for your project.



## Flagmats



**Autumn Horizon Flagmats**



**Placer Gold Flagmats**

## Thin Natural Stone Veneer



**Autumn Horizon**



**Bear Mountain**



**Bitterroot Natural Ledgerstone**



**Black Horse**



**Canyon Creek Natural Ledgerstone**



**Cherry Hill**



**Choctaw Dark**



**Choctaw Light Tumbled**

## Thin Natural Stone Veneer



**Farmers**



**Glacier Mountain Ledgerstone**



**Hillside Blend**



**Jericho**



**Loon Lake Ledgerstone**



**Mountain Valley Natural**



**Rocky Mountain Moss**

\* Mutual Materials offers a wide variety of natural stone. These images are representative of offerings, but may not be complete. If you are seeking natural stone, give us a call or stop in to a branch so that we can help you find the ideal stone for your project.



## FREQUENTLY ASKED QUESTIONS

---

### Can I install my own project even if I've never done this sort of work before?

Yes you can. Use the installation instructions, design ideas, and tips on our website [www.mutualmaterials.com](http://www.mutualmaterials.com) to guide your project.

---

### What type of maintenance do Mutual Materials pavers require?

Our pavers require minimal maintenance. Simply pressure wash or use a leaf blower on your project approximately once per year. You may need to sweep more sand into the joints after pressure washing.

---

### Do I need to seal my pavers?

No. However, sealers do offer 3 key benefits:

- 1) Sealers help resist penetrating stains.
- 2) Sealers enhance the color.
- 3) Certain types of sealers can bind the sand particles in the joints reducing the ability of weeds to generate.

---

### Will weeds grow between my pavers?

Weeds and grass may start to grow between your pavers from seeds and spores blown in by the wind. When this happens you can easily pull them out or use a spot weed killer, or herbicide - it won't damage the pavers.

---

### What is the white haze or powder on the pavers?

This is known as efflorescence. All concrete products contain cement which produces water-soluble calcium oxide. Calcium oxide inside the pavers reacts with water and—when carried to the surface through capillaries—reacts with carbon dioxide to form a haze of calcium carbonate. It is a natural process and will wear off in time. The amount of efflorescence is difficult to predict but it does eventually go away. Some specially-formulated cleaners may also be used to wash away efflorescence.

---

### What do I do if my pavers become stained?

One of the great benefits to concrete pavers is that the individual stained or damaged pavers can be removed and replaced. Remove the sand around the paver(s) and then use two flat-head screwdrivers to lift them out. It's a good idea to keep a few extra pavers in your shed or garage for just this need.

---

### How tall can I build my retaining wall?

The maximum height you can build your wall depends on the retaining wall block you have chosen. The maximum heights for our walls are:

- ManorStone - 3' 6"
- CypressStone - 4'
- Roman Cypress - 4'
- CornerStone: 50 Series - 3'; 100 Series - 4'; 200 Series - 6'

---

### Do I have to bury part of the bottom course of my wall?

Retaining wall blocks need to be securely anchored in the ground. If your wall is three (3) courses or fewer tall, we recommend you bury half of the bottom layer. If your wall is four (4) courses or more tall (up to the maximum recommended height), we recommend burying the entire bottom layer.

---

### If I'm building terraces, how far apart should they be?

The distance between terraces (face of wall to face of wall) should be at least two times the lower wall height. For example, if your lower wall is 2 feet tall, you need to go back 4 feet before building your next wall.

---

### What are the advantages of Mutual Materials retaining wall blocks versus using landscape timbers?

Our retaining wall units are available in a variety of styles and colors to blend with your home's exterior. And unlike products made from untreated wood which rot, warp, and become insect and rodent motels, our products are made to be durable, flexible and timeless.

---

### Will the color vary between runs of products?

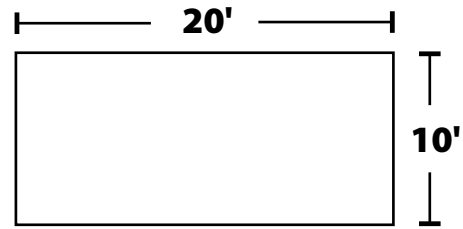
Color may vary from one run to the next. It is best to buy all the product for a project at once. We recommend mixing product from different pallets in order to get a more consistent color in your project. This is also known as blending pallets.

# PROJECT WORKSHEETS

## PAVING STONE PROJECT

### STEP A: Find total square footage

1. Make a drawing of your project (to 1 inch scale if possible).
2. Choose your stone shape and color.
3. Find the total square footage of your project using Step B below.
4. Locate your stone square footage on the product price label.



### STEP B: Formula to determine stones for the project

1. Multiply the length by the width to get the total square footage of the project.

\_\_\_\_\_ Length in feet **X** \_\_\_\_\_ Length in feet **=** \_\_\_\_\_ Total square feet

2. Multiply the total square footage of the project by square footage of the stone you chose.

\_\_\_\_\_ Sq. ft. **X** \_\_\_\_\_ Sq. ft. per stone **=** \_\_\_\_\_ Total stones needed  
 (calculated above) (calculated on price labels)

## RETAINING WALL PROJECT

### How many stones do I buy? 4" x 12" Wall Block

(Stones required per square foot of wall surface area)

# of Courses	Wall Height	5'	10'	15'	20'	25'
1	4"	5	10	15	20	25
2	8"	10	20	30	40	50
3	12"	15	30	45	60	75
4	16"	20	40	60	80	100
5	20"	25	50	75	100	125
6	24"	30	60	90	120	150

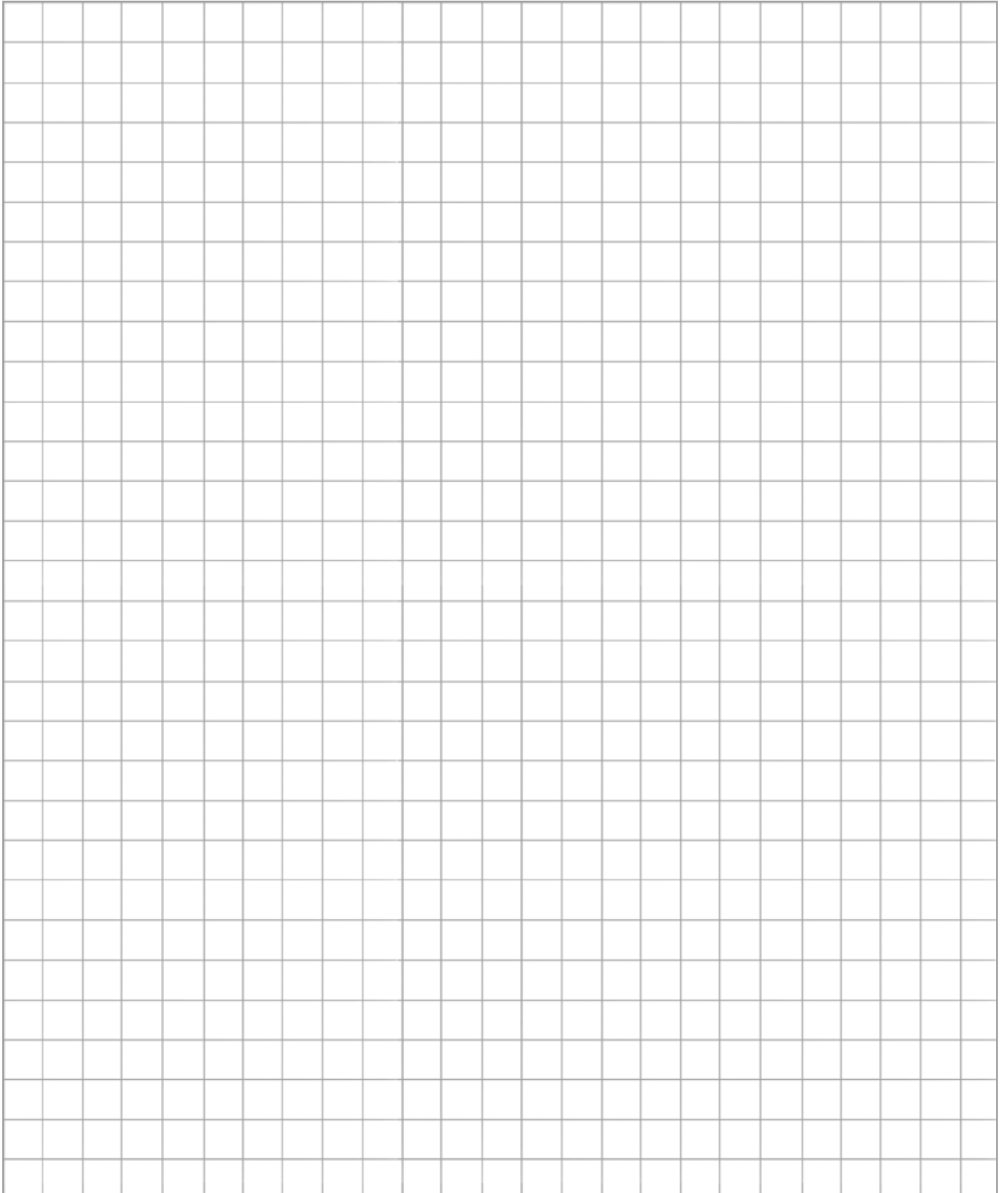
### How many stones do I buy? 6" x 16" Wall Block

(Stones required per square foot of wall surface area)

# of Courses	Wall Height	5'	10'	15'	20'	25'
1	4"	4	8	12	15	19
2	12"	8	16	24	30	38
3	18"	12	24	36	45	57
4	24"	16	32	48	60	76
5	30"	32	48	60	75	95
6	36"	24	48	72	90	114



# PROJECT WORKSHEETS



## PROJECT WORKSHEETS

This image shows a full page of blank graph paper. The grid consists of thin, light gray horizontal and vertical lines that intersect to form a uniform pattern of small squares across the entire surface. There are no margins, text, or other markings on the paper.



# BUILDING BEAUTY THAT LASTS



Back Cover: Glazed Slimbrick® in Picket Fence.  
Front Cover: Glazed Slimbrick® in Picket Fence.

## Connect with Us!

Visit our website and social media sites

[www.MutualMaterials.com](http://www.MutualMaterials.com)

Shop online at [store.mutualmaterials.com](http://store.mutualmaterials.com)



Cultured Stone is a registered trademark of Boral.  
All other trademarks used herein are property of Mutual Materials Co.

© 2018 Mutual Materials