



TERRACES



PLANTERS



RETAINING WALLS



STORMWATER MANAGEMENT



## COMMON APPLICATIONS

### GRAVITY WALLS

Gravity retaining walls can be built in tight areas with limited excavation space. MagnumStone's gravity retaining wall extenders offer designers the ability to build taller gravity retaining walls by increasing the wall depth in 2 ft. or 4 ft. increments. Gravity extenders deliver impactful performance while further fortifying retaining wall outside corners.

### GEOGRID WALLS

Geogrid retaining wall designs are used to reinforce soil mass and help designers build retaining walls that will resist active forces from above and behind the wall. MagnumStone SecureLug connection offers a superior interlock between the specified grids and the block-to-block connection.

### TERRACES WITH PLANTERS

Terraced planter retaining wall designs work in harmony with MagnumStone's big block retaining wall system. The lightweight, large units allow wall designers the flexible solutions with environmental benefits. The hollow core provides a plantable pocket to increase greenery and reduce the spread of heat island effect, commonly found in concrete surfaces.

### WATER APPLICATIONS

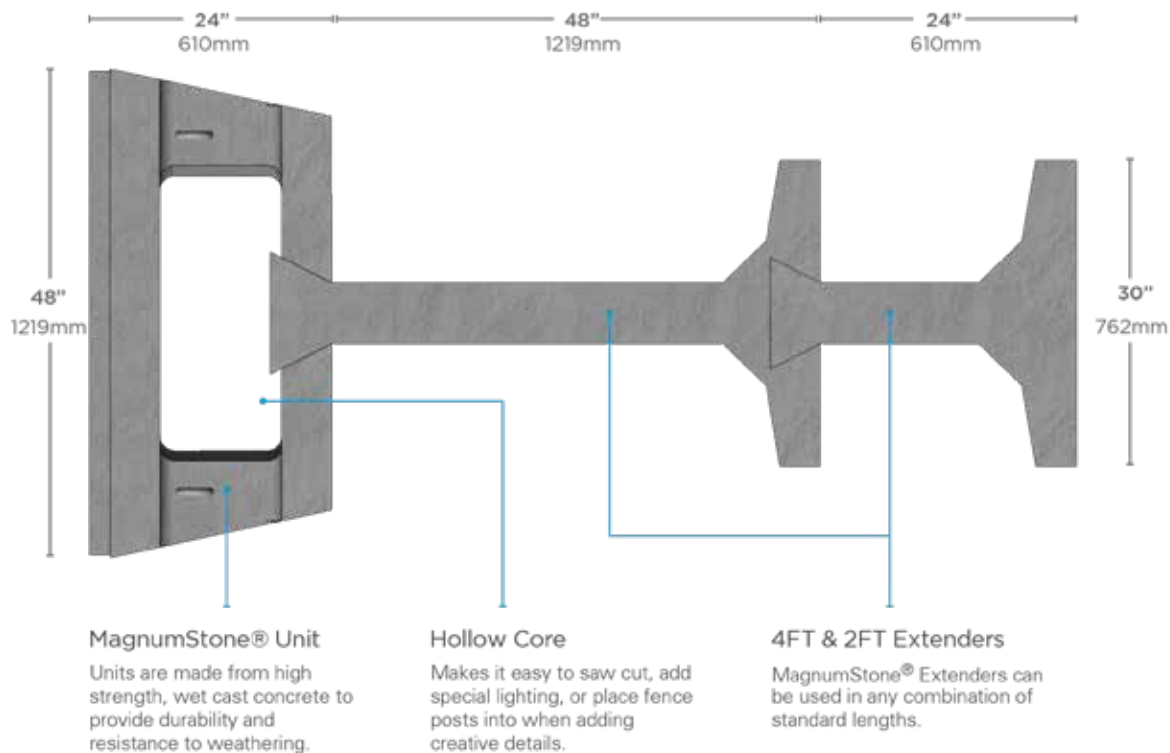
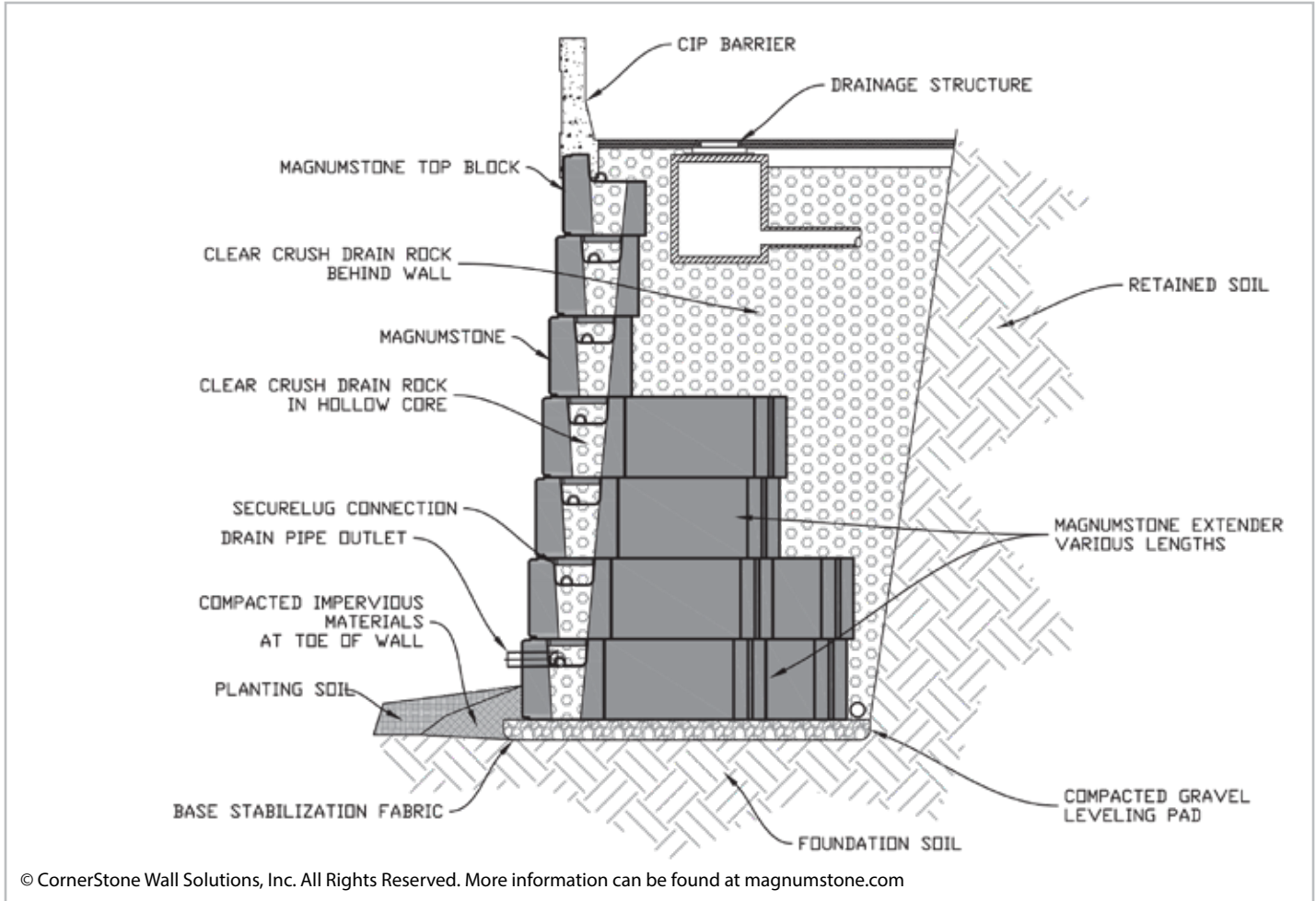
MagnumStone's hollow core offers internal vertical and horizontal drainage design advantages. This minimizes the effects of hydrostatic pressures behind the wall. MagnumStone's wet-cast units provide durable 4,000 psi (27.5 MPa) concrete that's resistant to freeze-thaw cycles and saturated conditions. MagnumStone blocks are optimal for stormwater management solutions including dry ponds, retention ponds and drainage channels.

MagnumStone is proudly recognized as the world's first wet-cast big block hollow-core retaining wall system for residential and commercial projects. With decades of industry experience, MagnumStone was developed by a contractor, for contractors, engineers, architects, and manufacturers.

The big blocks eco-friendly design contains 40% less concrete than solid concrete systems and delivers simple, efficient retaining walls with beautifully natural, textured facing. MagnumStone has the only multi-length gravity retaining wall extender units on the market, which enhance and encourage design creativity.

## GRAVITY WALLS

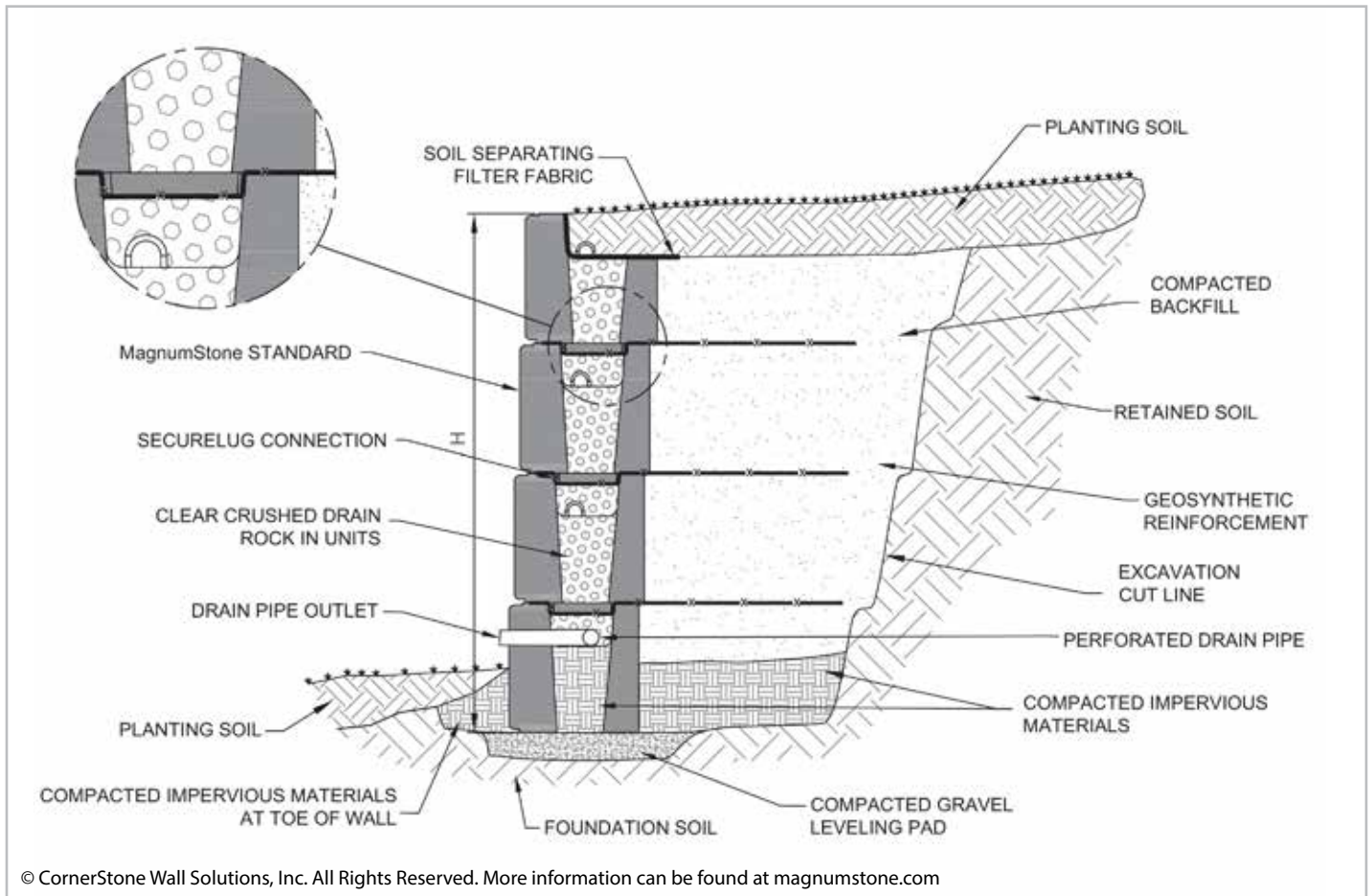
MagnumStone® Gravity Retaining Wall Extenders replace Geogrid reinforcements by using a tongue-and-groove concrete system to meet or exceed the demands of engineers. This system reduces the massive footprint of traditional cantilevered gravity retaining walls and gives developers and owners greater use of land above the wall.



## GEOGRID WALLS

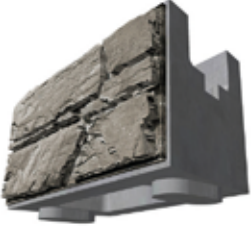
Geogrid is used to reinforce the soil mass behind the MagnumStone® units to create tall retaining wall systems. Geogrid helps resist pressures from loads such as parking lots, roadways, water applications or positive slopes.

Geogrid with the appropriate lengths, layers, and compacted backfill materials will resist forces above and behind the wall. The use of Geogrid reinforcements with the MagnumStone® system is highly cost effective for very tall wall structures. For walls higher than 3.0 ft, consult a qualified engineer.



## UNIT SPECIFICATIONS

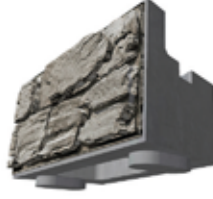
A full list of specifications can be found on: [magnumstone.com](http://magnumstone.com).



**STANDARD**  
1370 lbs (621 kgs)



**STANDARD BASE**  
1345 lbs (610 kgs)

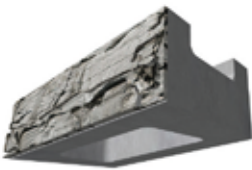


**STANDARD TOP**  
1220 lbs (553 kgs)

<b>HEIGHT</b>	24"	610 mm
<b>DEPTH</b>	24"	610 mm
<b>FACE WIDTH</b>	48"	1219 mm
<b>BACK WIDTH</b>	39"	991 mm
<b>FACE AREA</b>	8 sq ft	0.745 m <sup>2</sup>
<b>SETBACK</b>	4.5° / 2.4° / 0°	



**HALF HIGH**  
750 lbs (340 kgs)



**HALF HIGH BASE**  
725 lbs (328 kgs)



**HALF HIGH TOP**  
680 lbs (308 kgs)

<b>HEIGHT</b>	12"	305 mm
<b>DEPTH</b>	24"	610 mm
<b>FACE WIDTH</b>	48"	1219 mm
<b>BACK WIDTH</b>	39"	991 mm
<b>FACE AREA</b>	4 sq ft	0.37 m <sup>2</sup>
<b>SETBACK</b>	4.5° / 2.4° / 0°	



**2 FT EXTENDER**  
520 lbs (236 kgs)

<b>HEIGHT</b>	24"	610 mm
<b>DEPTH</b>	24"	610 mm
<b>BACK WIDTH</b>	30	762 mm



**4 FT EXTENDER**  
820 lbs (372 kgs)

<b>HEIGHT</b>	24"	610 mm
<b>DEPTH</b>	48"	1219 mm
<b>BACK WIDTH</b>	30	762 mm



**CORNER END**  
340 lbs (154 kgs)

<b>HEIGHT</b>	24"	610 mm
<b>DEPTH</b>	8"	203 mm
<b>TOP WIDTH</b>	2"	51 mm
<b>BOTTOM WIDTH</b>	4"	102 mm



**HALF HIGH CORNER END**  
170 lbs (77 kgs)

<b>HEIGHT</b>	12"	305 mm
<b>DEPTH</b>	9"	229 mm
<b>TOP WIDTH</b>	3"	76 mm
<b>BOTTOM WIDTH</b>	4"	102 mm



**STEP/CAP**  
290 lbs (131 kgs)

<b>HEIGHT</b>	6"	152 mm
<b>DEPTH</b>	24"	610 mm
<b>BACK WIDTH</b>	48	1219 mm

Dimensions and Weights may vary. Please check with local producer.

© CornerStone Wall Solutions, Inc. All Rights Reserved. More information can be found at [magnumstone.com](http://magnumstone.com)



## MUTUAL MATERIALS LOCATIONS

For product information and customer service, call **1-888-MUTUALØ (688-8250)**.

WASHINGTON		OREGON	IDAHO	MONTANA
Auburn	Port Orchard	Bend	Boise	Missoula
Bellevue	South Seattle	Clackamas	Hayden	
Bellingham	Spokane	Durham		
Marysville	Tacoma (Parkland)	Portland		
Olympia (Tumwater)	Vancouver, WA	Salem		

